



[Go to Product page](#)

Datasheet for ABIN5531646
anti-MESDC2 antibody (C-Term)

3 Images

Overview

Quantity:	400 µL
Target:	MESDC2
Binding Specificity:	AA 206-234, C-Term
Reactivity:	Human
Host:	Rabbit
Clonality:	Polyclonal
Conjugate:	This MESDC2 antibody is un-conjugated
Application:	Western Blotting (WB), Immunofluorescence (IF), Immunohistochemistry (Paraffin-embedded Sections) (IHC (p))

Product Details

Immunogen:	This MESDC2 antibody is generated from rabbits immunized with a KLH conjugated synthetic peptide between 206-234 amino acids from the C-terminal region of human MESDC2.
Isotype:	Ig Fraction
Purification:	This antibody is purified through a protein A column, followed by peptide affinity purification.

Target Details

Target:	MESDC2
Alternative Name:	MESDC2 (MESDC2 Products)
Background:	Chaperone specifically assisting the folding of beta-propeller/EGF modules within the family of low-density lipoprotein receptors (LDLRs). Acts as a modulator of the Wnt pathway through

Target Details

chaperoning the coreceptors of the canonical Wnt pathway, LRP5 and LRP6, to the plasma membrane. Essential for specification of embryonic polarity and mesoderm induction.

Molecular Weight: 26 kDa

Gene ID: 23184

UniProt: [Q14696](#)

Application Details

Application Notes: For WB starting dilution is: 1:1000

For IHC-P starting dilution is: 1:10~50

For IF starting dilution is: 1:10~50

Restrictions: For Research Use only

Handling

Format: Liquid

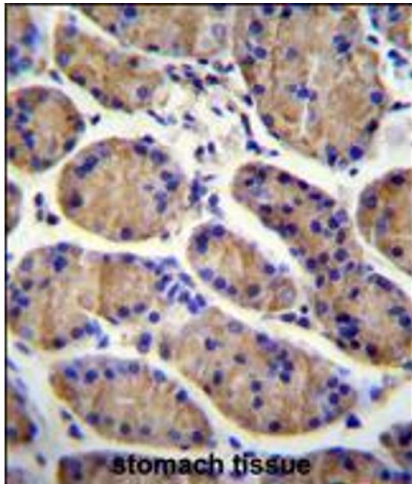
Buffer: Supplied in PBS with 0.09 % (W/V) sodium azide.

Preservative: Sodium azide

Precaution of Use: This product contains Sodium azide: a POISONOUS AND HAZARDOUS SUBSTANCE which should be handled by trained staff only.

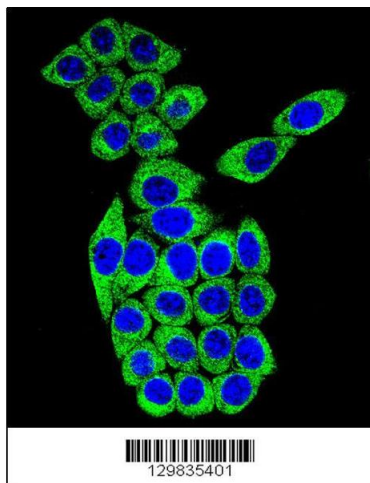
Storage: 4 °C,-20 °C

Storage Comment: Store at 4°C for three months and -20°C, stable for up to one year. As with all antibodies care should be taken to avoid repeated freeze thaw cycles. Antibodies should not be exposed to prolonged high temperatures.



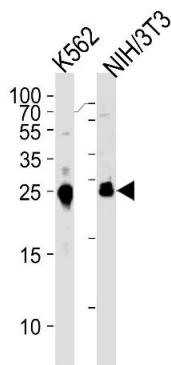
Immunohistochemistry

Image 1. MESDC2 Antibody immunohistochemistry analysis in formalin fixed and paraffin embedded human stomach tissue followed by peroxidase conjugation of the secondary antibody and DAB staining.



Immunofluorescence

Image 2. Confocal immunofluorescent analysis of MESDC2 Antibody with 293 cell followed by Alexa Fluor[®] 488-conjugated goat anti-rabbit IgG (green). DAPI was used to stain the cell nuclear (blue).



Western Blotting

Image 3. Western blot analysis of lysates from K562, mouse NIH/3T3 cell line (from left to right), using MESDC2 Antibody at 1:1000 at each lane.