

Datasheet for ABIN5531659

anti-MRPS15 antibody (AA 124-153)[Go to Product page](#)**1** Image

Overview

Quantity:	400 µL
Target:	MRPS15
Binding Specificity:	AA 124-153
Reactivity:	Human
Host:	Rabbit
Clonality:	Polyclonal
Conjugate:	This MRPS15 antibody is un-conjugated
Application:	Western Blotting (WB)

Product Details

Immunogen:	This MRPS15 antibody is generated from rabbits immunized with a KLH conjugated synthetic peptide between 124-153 amino acids from the Central region of human MRPS15.
Isotype:	Ig Fraction
Purification:	This antibody is purified through a protein A column, followed by peptide affinity purification.

Target Details

Target:	MRPS15
Alternative Name:	MRPS15 (MRPS15 Products)
Background:	Mammalian mitochondrial ribosomal proteins are encoded by nuclear genes and help in protein synthesis within the mitochondrion. Mitochondrial ribosomes (mitoribosomes) consist of a small 28S subunit and a large 39S subunit. They have an estimated 75 % protein to rRNA

Target Details

composition compared to prokaryotic ribosomes, where this ratio is reversed. Another difference between mammalian mitoribosomes and prokaryotic ribosomes is that the latter contain a 5S rRNA. Among different species, the proteins comprising the mitoribosome differ greatly in sequence, and sometimes in biochemical properties, which prevents easy recognition by sequence homology. This gene encodes a 28S subunit protein that belongs to the ribosomal protein S15P family. The encoded protein is more than two times the size of its E. coli counterpart, with the 12S rRNA binding sites conserved. Between human and mouse, the encoded protein is the least conserved among small subunit ribosomal proteins. Pseudogenes corresponding to this gene are found on chromosomes 15q and 19q.

Molecular Weight: 30 kDa

Gene ID: 64960

UniProt: [P82914](#)

Application Details

Application Notes: For WB starting dilution is: 1:1000

Restrictions: For Research Use only

Handling

Format: Liquid

Concentration: 0.5 mg/mL

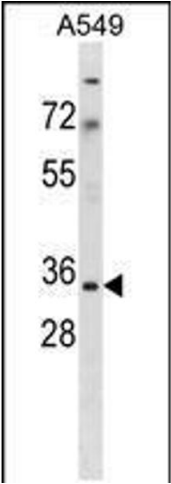
Buffer: Supplied in PBS with 0.09 % (W/V) sodium azide.

Preservative: Sodium azide

Precaution of Use: This product contains Sodium azide: a POISONOUS AND HAZARDOUS SUBSTANCE which should be handled by trained staff only.

Storage: 4 °C, -20 °C

Storage Comment: Store at 4°C for three months and -20°C, stable for up to one year. As with all antibodies care should be taken to avoid repeated freeze thaw cycles. Antibodies should not be exposed to prolonged high temperatures.



Western Blotting

Image 1. Western blot analysis in A549 cell line lysates (35ug/lane).