

Datasheet for ABIN5531702
anti-NPFFR1 antibody (C-Term)[Go to Product page](#)

1 Image

Overview

Quantity:	400 µL
Target:	NPFFR1
Binding Specificity:	AA 337-366, C-Term
Reactivity:	Human
Host:	Rabbit
Clonality:	Polyclonal
Conjugate:	This NPFFR1 antibody is un-conjugated
Application:	Western Blotting (WB)

Product Details

Immunogen:	This NPFFR1 antibody is generated from rabbits immunized with a KLH conjugated synthetic peptide between 337-366 amino acids from the C-terminal region of human NPFFR1.
Isotype:	Ig Fraction
Purification:	This antibody is purified through a protein A column, followed by peptide affinity purification.

Target Details

Target:	NPFFR1
Alternative Name:	NPFFR1 (NPFFR1 Products)
Background:	Receptor for NPAF (A-18-F-amide) and NPFF (F-8-F-amide) neuropeptides, also known as morphine-modulating peptides. Can also be activated by a variety of naturally occurring or synthetic FMRF-amide like ligands. This receptor mediates its action by association with G

Target Details

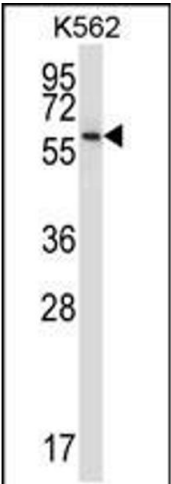
	proteins that activate a phosphatidylinositol-calcium second messenger system.
Molecular Weight:	48 kDa
Gene ID:	64106
UniProt:	Q9GZQ6
Pathways:	cAMP Metabolic Process

Application Details

Application Notes:	For WB starting dilution is: 1:1000
Restrictions:	For Research Use only

Handling

Format:	Liquid
Concentration:	0.5 mg/mL
Buffer:	Supplied in PBS with 0.09 % (W/V) sodium azide.
Preservative:	Sodium azide
Precaution of Use:	This product contains Sodium azide: a POISONOUS AND HAZARDOUS SUBSTANCE which should be handled by trained staff only.
Storage:	4 °C,-20 °C
Storage Comment:	Store at 4°C for three months and -20°C, stable for up to one year. As with all antibodies care should be taken to avoid repeated freeze thaw cycles. Antibodies should not be exposed to prolonged high temperatures.



Western Blotting

Image 1. Western blot analysis in K562 cell line lysates (35ug/lane).