

Datasheet for ABIN5531825
anti-PGRMC2 antibody (C-Term)[Go to Product page](#)

2 Images

Overview

Quantity:	400 µL
Target:	PGRMC2
Binding Specificity:	AA 192-221, C-Term
Reactivity:	Human
Host:	Rabbit
Clonality:	Polyclonal
Conjugate:	This PGRMC2 antibody is un-conjugated
Application:	Western Blotting (WB)

Product Details

Immunogen:	This PGRMC2 antibody is generated from rabbits immunized with a KLH conjugated synthetic peptide between 192-221 amino acids from the C-terminal region of human PGRMC2.
Isotype:	Ig Fraction
Purification:	This antibody is purified through a protein A column, followed by peptide affinity purification.

Target Details

Target:	PGRMC2
Alternative Name:	PGRMC2 (PGRMC2 Products)
Background:	PGRMC2 is receptor for steroids (Potential).
Molecular Weight:	24 kDa

Target Details

Gene ID: 10424

UniProt: [O15173](#)

Pathways: [Steroid Hormone Mediated Signaling Pathway](#)

Application Details

Application Notes: For WB starting dilution is: 1:1000

Restrictions: For Research Use only

Handling

Format: Liquid

Concentration: 0.5 mg/mL

Buffer: Supplied in PBS with 0.09 % (W/V) sodium azide.

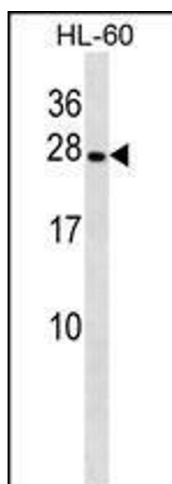
Preservative: Sodium azide

Precaution of Use: This product contains Sodium azide: a POISONOUS AND HAZARDOUS SUBSTANCE which should be handled by trained staff only.

Storage: 4 °C, -20 °C

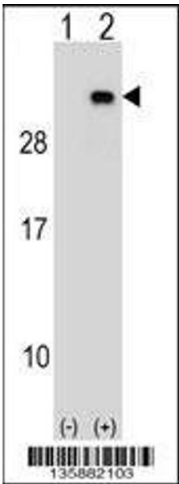
Storage Comment: Store at 4°C for three months and -20°C, stable for up to one year. As with all antibodies care should be taken to avoid repeated freeze thaw cycles. Antibodies should not be exposed to prolonged high temperatures.

Images



Western Blotting

Image 1. Western blot analysis in HL-60 cell line lysates (35ug/lane).



Western Blotting

Image 2. Western blot analysis of PGRMC2 using rabbit polyclonal PGRMC2 Antibody using 293 cell lysates (2 ug/lane) either nontransfected (Lane 1) or transiently transfected (Lane 2) with the PGRMC2 gene.