

Datasheet for ABIN5531905
anti-PYGM antibody (C-Term)

3 Images

[Go to Product page](#)

Overview

Quantity:	400 µL
Target:	PYGM
Binding Specificity:	AA 698-727, C-Term
Reactivity:	Human
Host:	Rabbit
Clonality:	Polyclonal
Conjugate:	This PYGM antibody is un-conjugated
Application:	Western Blotting (WB), Immunohistochemistry (Paraffin-embedded Sections) (IHC (p))

Product Details

Immunogen:	This PYGM antibody is generated from rabbits immunized with a KLH conjugated synthetic peptide between 698-727 amino acids from the C-terminal region of human PYGM.
Isotype:	Ig Fraction
Purification:	This antibody is prepared by Saturated Ammonium Sulfate (SAS) precipitation followed by dialysis

Target Details

Target:	PYGM
Alternative Name:	PYGM (PYGM Products)
Background:	PYGM catalyzes and regulates the breakdown of glycogen to glucose-1-phosphate. Defects in PYGM are the cause of glycogen storage disease type 5 (GSD5), also known as McArdle

Target Details

disease. GSD5 is a metabolic disorder resulting in myopathy characterized by exercise intolerance, cramps, muscle weakness and recurrent myoglobinuria.

Molecular Weight: 97 kDa

Gene ID: 5837

UniProt: [P11217](#)

Pathways: [Cellular Glucan Metabolic Process](#)

Application Details

Application Notes: For WB starting dilution is: 1:1000

For IHC-P starting dilution is: 1:10~50

Restrictions: For Research Use only

Handling

Format: Liquid

Concentration: 2 mg/mL

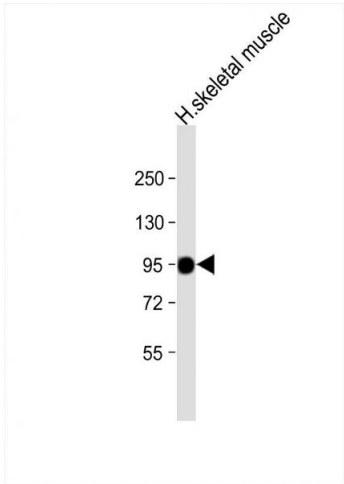
Buffer: Supplied in PBS with 0.09 % (W/V) sodium azide.

Preservative: Sodium azide

Precaution of Use: This product contains Sodium azide: a POISONOUS AND HAZARDOUS SUBSTANCE which should be handled by trained staff only.

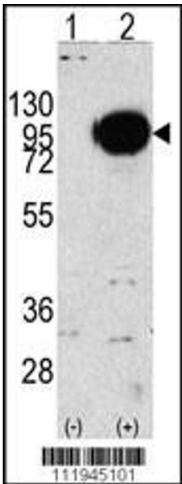
Storage: 4 °C,-20 °C

Storage Comment: Store at 4°C for three months and -20°C, stable for up to one year. As with all antibodies care should be taken to avoid repeated freeze thaw cycles. Antibodies should not be exposed to prolonged high temperatures.



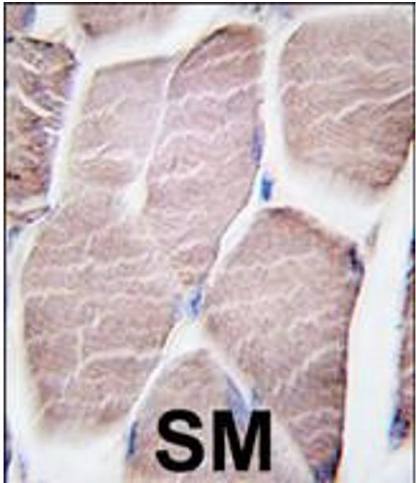
Western Blotting

Image 1. Western Blot at 1:8000 dilution + human skeletal muscle lysate Lysates/proteins at 20 ug per lane.



Western Blotting

Image 2. Western blot analysis of PYGM using rabbit polyclonal PYGM Antibody using 293 cell lysates (2 ug/lane) either nontransfected (Lane 1) or transiently transfected with the PYGM gene (Lane 2).



Immunohistochemistry

Image 3. Formalin-fixed and paraffin-embedded human skeletal muscle tissue reacted with PYGM antibody , which was peroxidase-conjugated to the secondary antibody, followed by DAB staining.