

Datasheet for ABIN5531916  
**anti-Peropsin antibody (C-Term)**[Go to Product page](#)

## 1 Image

## Overview

Quantity:	400 µL
Target:	Peropsin (RRH)
Binding Specificity:	AA 213-240, C-Term
Reactivity:	Human
Host:	Rabbit
Clonality:	Polyclonal
Conjugate:	This Peropsin antibody is un-conjugated
Application:	Western Blotting (WB)

## Product Details

Immunogen:	This RRH antibody is generated from rabbits immunized with a KLH conjugated synthetic peptide between 213-240 amino acids from the C-terminal region of human RRH.
Isotype:	Ig Fraction
Purification:	This antibody is purified through a protein A column, followed by peptide affinity purification.

## Target Details

Target:	Peropsin (RRH)
Alternative Name:	RRH ( <a href="#">RRH Products</a> )
Background:	Opsins are members of the guanine nucleotide-binding protein (G protein)-coupled receptor superfamily. This gene belongs to the seven-exon subfamily of mammalian opsin genes that includes opsin 5 and retinal G protein coupled receptor. [provided by RefSeq].

## Target Details

Molecular Weight:	37 kDa
Gene ID:	10692
UniProt:	<a href="#">O14718</a>

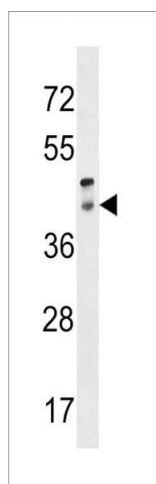
## Application Details

Application Notes:	For WB starting dilution is: 1:1000
Restrictions:	For Research Use only

## Handling

Format:	Liquid
Concentration:	0.5 mg/mL
Buffer:	Supplied in PBS with 0.09 % (W/V) sodium azide.
Preservative:	Sodium azide
Precaution of Use:	This product contains Sodium azide: a POISONOUS AND HAZARDOUS SUBSTANCE which should be handled by trained staff only.
Storage:	4 °C, -20 °C
Storage Comment:	Store at 4°C for three months and -20°C, stable for up to one year. As with all antibodies care should be taken to avoid repeated freeze thaw cycles. Antibodies should not be exposed to prolonged high temperatures.

## Images



### Western Blotting

**Image 1.** Western blot analysis in human placenta tissue lysates (35ug/lane).