



[Go to Product page](#)

Datasheet for ABIN5531929  
**anti-TEKT1 antibody (AA 252-281)**

1 Image

### Overview

Quantity:	400 µL
Target:	TEKT1
Binding Specificity:	AA 252-281
Reactivity:	Human
Host:	Rabbit
Clonality:	Polyclonal
Conjugate:	This TEKT1 antibody is un-conjugated
Application:	Western Blotting (WB)

### Product Details

Immunogen:	This TEKT1 antibody is generated from rabbits immunized with a KLH conjugated synthetic peptide between 252-281 amino acids from the Central region of human TEKT1.
Isotype:	Ig Fraction
Purification:	This antibody is purified through a protein A column, followed by peptide affinity purification.

### Target Details

Target:	TEKT1
Alternative Name:	TEKT1 ( <a href="#">TEKT1 Products</a> )
Background:	This gene product belongs to the tektin family of proteins. Tektins comprise a family of filament-forming proteins that are coassembled with tubulins to form ciliary and flagellar microtubules. This gene is predominantly expressed in the testis and in mouse, tektin 1 mRNA

## Target Details

---

was localized to the spermatocytes and round spermatids in the seminiferous tubules, indicating that it may play a role in spermatogenesis.

Molecular Weight: 48 kDa

Gene ID: 83659

UniProt: [Q969V4](#)

## Application Details

---

Application Notes: For WB starting dilution is: 1:1000

Restrictions: For Research Use only

## Handling

---

Format: Liquid

Concentration: 0.3 mg/mL

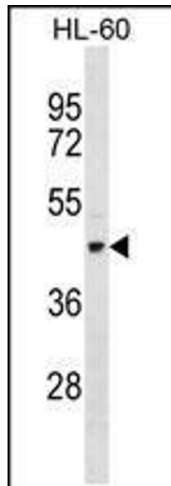
Buffer: Supplied in PBS with 0.09 % (W/V) sodium azide.

Preservative: Sodium azide

Precaution of Use: This product contains Sodium azide: a POISONOUS AND HAZARDOUS SUBSTANCE which should be handled by trained staff only.

Storage: 4 °C, -20 °C

Storage Comment: Store at 4°C for three months and -20°C, stable for up to one year. As with all antibodies care should be taken to avoid repeated freeze thaw cycles. Antibodies should not be exposed to prolonged high temperatures.



### Western Blotting

**Image 1.** Western blot analysis in HL-60 cell line lysates (35ug/lane).