

Datasheet for ABIN5531935
anti-NR2E3 antibody (AA 170-198)



[Go to Product page](#)

1 Image

Overview

Quantity:	400 µL
Target:	NR2E3
Binding Specificity:	AA 170-198
Reactivity:	Human
Host:	Rabbit
Clonality:	Polyclonal
Conjugate:	This NR2E3 antibody is un-conjugated
Application:	Western Blotting (WB)

Product Details

Immunogen:	This NR2E3 antibody is generated from rabbits immunized with a KLH conjugated synthetic peptide between 170-198 amino acids from the Central region of human NR2E3.
Isotype:	Ig Fraction
Purification:	This antibody is purified through a protein A column, followed by peptide affinity purification.

Target Details

Target:	NR2E3
Alternative Name:	NR2E3 (NR2E3 Products)
Background:	This protein is part of a large family of nuclear receptor transcription factors involved in signaling pathways. Nuclear receptors have been shown to regulate pathways involved in embryonic development, as well as in maintenance of proper cell function in adults. Members

Target Details

of this family are characterized by discrete domains that function in DNA and ligand binding. This gene encodes a retinal nuclear receptor that is a ligand-dependent transcription factor. Defects in this gene are a cause of enhanced S cone syndrome. Alternatively spliced transcript variants encoding different isoforms have been identified.

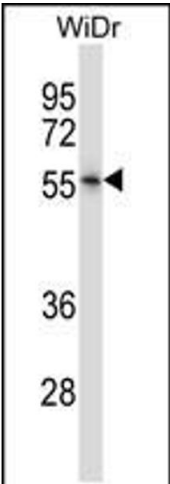
Molecular Weight:	45 kDa
Gene ID:	10002
UniProt:	Q9Y5X4
Pathways:	Nuclear Receptor Transcription Pathway , Steroid Hormone Mediated Signaling Pathway

Application Details

Application Notes:	For WB starting dilution is: 1:1000
Restrictions:	For Research Use only

Handling

Format:	Liquid
Concentration:	0.36 mg/mL
Buffer:	Supplied in PBS with 0.09 % (W/V) sodium azide.
Preservative:	Sodium azide
Precaution of Use:	This product contains Sodium azide: a POISONOUS AND HAZARDOUS SUBSTANCE which should be handled by trained staff only.
Storage:	4 °C,-20 °C
Storage Comment:	Store at 4°C for three months and -20°C, stable for up to one year. As with all antibodies care should be taken to avoid repeated freeze thaw cycles. Antibodies should not be exposed to prolonged high temperatures.



Western Blotting

Image 1. Western blot analysis in WiDr cell line lysates (35ug/lane).