



[Go to Product page](#)

Datasheet for ABIN5531944
anti-PLEKHF1 antibody (N-Term)

1 Image

Overview

Quantity:	400 µL
Target:	PLEKHF1
Binding Specificity:	AA 51-79, N-Term
Reactivity:	Human
Host:	Rabbit
Clonality:	Polyclonal
Conjugate:	This PLEKHF1 antibody is un-conjugated
Application:	Western Blotting (WB)

Product Details

Immunogen:	This PLEKHF1 antibody is generated from rabbits immunized with a KLH conjugated synthetic peptide between 51-79 amino acids from the N-terminal region of human PLEKHF1.
Isotype:	Ig Fraction
Purification:	This antibody is purified through a protein A column, followed by peptide affinity purification.

Target Details

Target:	PLEKHF1
Alternative Name:	PLEKHF1 (PLEKHF1 Products)
Background:	PLEKHF1 may induce apoptosis through the lysosomal-mitochondrial pathway. Translocates to the lysosome initiating the permeabilization of lysosomal membrane (LMP) and resulting in the release of CTSD and CTSL to the cytoplasm. Triggers the caspase-independent apoptosis

Target Details

by altering mitochondrial membrane permeabilization (MMP) resulting in the release of PDCD8.

Molecular Weight: 31 kDa

Gene ID: 79156

UniProt: [Q96S99](#)

Application Details

Application Notes: For WB starting dilution is: 1:1000

Restrictions: For Research Use only

Handling

Format: Liquid

Concentration: 0.5 mg/mL

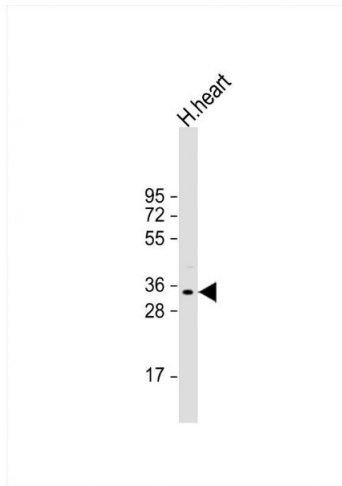
Buffer: Supplied in PBS with 0.09 % (W/V) sodium azide.

Preservative: Sodium azide

Precaution of Use: This product contains Sodium azide: a POISONOUS AND HAZARDOUS SUBSTANCE which should be handled by trained staff only.

Storage: 4 °C, -20 °C

Storage Comment: Store at 4°C for three months and -20°C, stable for up to one year. As with all antibodies care should be taken to avoid repeated freeze thaw cycles. Antibodies should not be exposed to prolonged high temperatures.



Western Blotting

Image 1. Western Blot at 1:1000 dilution + human heart lysate Lysates/proteins at 20 ug per lane.