

Datasheet for ABIN5531952  
**anti-KCTD6 antibody (AA 75-103)**



[Go to Product page](#)

1 Image

## Overview

Quantity:	400 µL
Target:	KCTD6
Binding Specificity:	AA 75-103
Reactivity:	Human, Mouse
Host:	Rabbit
Clonality:	Polyclonal
Conjugate:	This KCTD6 antibody is un-conjugated
Application:	Western Blotting (WB)

## Product Details

Immunogen:	This KCTD6 antibody is generated from rabbits immunized with a KLH conjugated synthetic peptide between 75-103 amino acids from the Central region of human KCTD6.
Isotype:	Ig Fraction
Purification:	This antibody is purified through a protein A column, followed by peptide affinity purification.

## Target Details

Target:	KCTD6
Alternative Name:	KCTD6 ( <a href="#">KCTD6 Products</a> )
Background:	KCTD6 is a domain of a potassium channel.
Molecular Weight:	28 kDa

## Target Details

Gene ID: 200845

UniProt: [Q8NC69](#)

## Application Details

Application Notes: For WB starting dilution is: 1:1000

Restrictions: For Research Use only

## Handling

Format: Liquid

Concentration: 0.5 mg/mL

Buffer: Supplied in PBS with 0.09 % (W/V) sodium azide.

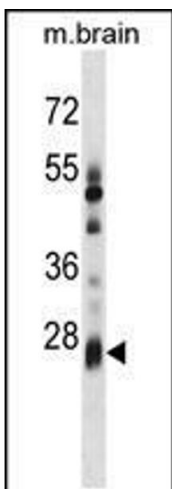
Preservative: Sodium azide

Precaution of Use: This product contains Sodium azide: a POISONOUS AND HAZARDOUS SUBSTANCE which should be handled by trained staff only.

Storage: 4 °C,-20 °C

Storage Comment: Store at 4°C for three months and -20°C, stable for up to one year. As with all antibodies care should be taken to avoid repeated freeze thaw cycles. Antibodies should not be exposed to prolonged high temperatures.

## Images



### Western Blotting

**Image 1.** Western blot analysis in mouse brain tissue lysates (35ug/lane).