

Datasheet for ABIN5531970
anti-THOC1 antibody (C-Term)[Go to Product page](#)

2 Images

Overview

Quantity:	400 µL
Target:	THOC1
Binding Specificity:	AA 541-570, C-Term
Reactivity:	Human
Host:	Rabbit
Clonality:	Polyclonal
Conjugate:	This THOC1 antibody is un-conjugated
Application:	Western Blotting (WB)

Product Details

Immunogen:	This THOC1 antibody is generated from rabbits immunized with a KLH conjugated synthetic peptide between 541-570 amino acids from the C-terminal region of human THOC1.
Isotype:	Ig Fraction
Purification:	This antibody is purified through a protein A column, followed by peptide affinity purification.

Target Details

Target:	THOC1
Alternative Name:	THOC1 (THOC1 Products)
Background:	HPR1 is part of the TREX (transcription/export) complex, which includes TEX1 (MIM 606929), THO2 (MIM 300395), ALY (MIM 604171), and UAP56 (MIM 142560).

Target Details

Molecular Weight:	76 kDa
Gene ID:	9984
UniProt:	Q96FV9

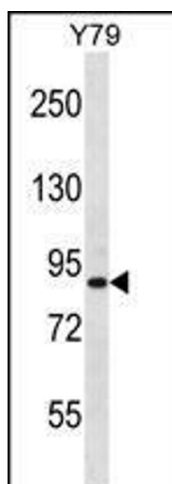
Application Details

Application Notes:	For WB starting dilution is: 1:1000
Restrictions:	For Research Use only

Handling

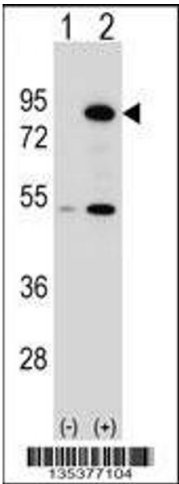
Format:	Liquid
Concentration:	0.35 mg/mL
Buffer:	Supplied in PBS with 0.09 % (W/V) sodium azide.
Preservative:	Sodium azide
Precaution of Use:	This product contains Sodium azide: a POISONOUS AND HAZARDOUS SUBSTANCE which should be handled by trained staff only.
Storage:	4 °C, -20 °C
Storage Comment:	Store at 4°C for three months and -20°C, stable for up to one year. As with all antibodies care should be taken to avoid repeated freeze thaw cycles. Antibodies should not be exposed to prolonged high temperatures.

Images



Western Blotting

Image 1. Western blot analysis in Y79 cell line lysates (35ug/lane).



Western Blotting

Image 2. Western blot analysis of THOC1 using rabbit polyclonal THOC1 Antibody using 293 cell lysates (2 ug/lane) either nontransfected (Lane 1) or transiently transfected (Lane 2) with the THOC1 gene.