

Datasheet for ABIN5532003
anti-RAD1 antibody (AA 118-146)



[Go to Product page](#)

1 Image

Overview

Quantity:	400 µL
Target:	RAD1
Binding Specificity:	AA 118-146
Reactivity:	Human
Host:	Rabbit
Clonality:	Polyclonal
Conjugate:	This RAD1 antibody is un-conjugated
Application:	Western Blotting (WB)

Product Details

Immunogen:	This RAD1 antibody is generated from rabbits immunized with a KLH conjugated synthetic peptide between 118-146 amino acids from the Central region of human RAD1.
Isotype:	Ig Fraction
Purification:	This antibody is purified through a protein A column, followed by peptide affinity purification.

Target Details

Target:	RAD1
Alternative Name:	RAD1 (RAD1 Products)
Background:	This gene encodes a component of a heterotrimeric cell cycle checkpoint complex, known as the 9-1-1 complex, that is activated to stop cell cycle progression in response to DNA damage or incomplete DNA replication. The 9-1-1 complex is recruited by RAD17 to affected sites where

Target Details

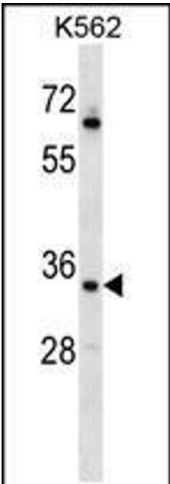
	it may attract specialized DNA polymerases and other DNA repair effectors. Alternatively spliced transcript variants of this gene have been described. [provided by RefSeq].
Molecular Weight:	32 kDa
Gene ID:	5810
UniProt:	O60671
Pathways:	M Phase

Application Details

Application Notes:	For WB starting dilution is: 1:1000
Restrictions:	For Research Use only

Handling

Format:	Liquid
Concentration:	0.5 mg/mL
Buffer:	Supplied in PBS with 0.09 % (W/V) sodium azide.
Preservative:	Sodium azide
Precaution of Use:	This product contains Sodium azide: a POISONOUS AND HAZARDOUS SUBSTANCE which should be handled by trained staff only.
Storage:	4 °C,-20 °C
Storage Comment:	Store at 4°C for three months and -20°C, stable for up to one year. As with all antibodies care should be taken to avoid repeated freeze thaw cycles. Antibodies should not be exposed to prolonged high temperatures.



Western Blotting

Image 1. Western blot analysis in K562 cell line lysates (35ug/lane).