



Datasheet for ABIN5532018  
**anti-RBBP7 antibody (AA 191-219)**



[Go to Product page](#)

2 Images

Overview

Quantity:	400 µL
Target:	RBBP7
Binding Specificity:	AA 191-219
Reactivity:	Human
Host:	Rabbit
Clonality:	Polyclonal
Conjugate:	This RBBP7 antibody is un-conjugated
Application:	Western Blotting (WB)

Product Details

Immunogen:	This RBBP7 antibody is generated from rabbits immunized with a KLH conjugated synthetic peptide between 191-219 amino acids from the Central region of human RBBP7.
Isotype:	Ig Fraction
Purification:	This antibody is purified through a protein A column, followed by peptide affinity purification.

Target Details

Target:	RBBP7
Alternative Name:	RBBP7 ( <a href="#">RBBP7 Products</a> )
Background:	This protein is a ubiquitously expressed nuclear protein and belongs to a highly conserved subfamily of WD-repeat proteins. It is found among several proteins that binds directly to retinoblastoma protein, which regulates cell proliferation. The encoded protein is found in many

## Target Details

---

histone deacetylase complexes, including mSin3 co-repressor complex. It is also present in protein complexes involved in chromatin assembly. This protein can interact with BRCA1 tumor-suppressor gene and may have a role in the regulation of cell proliferation and differentiation. Two transcript variants encoding different isoforms have been found for this gene.

---

Molecular Weight: 48 kDa

---

Gene ID: 5931

---

UniProt: [Q16576](#)

## Application Details

---

Application Notes: For WB starting dilution is: 1:1000

---

Restrictions: For Research Use only

## Handling

---

Format: Liquid

---

Concentration: 0.5 mg/mL

---

Buffer: Supplied in PBS with 0.09 % (W/V) sodium azide.

---

Preservative: Sodium azide

---

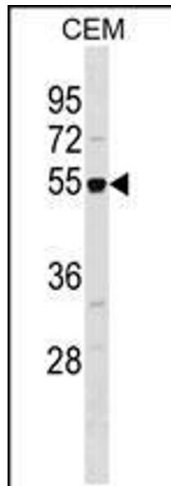
Precaution of Use: This product contains Sodium azide: a POISONOUS AND HAZARDOUS SUBSTANCE which should be handled by trained staff only.

---

Storage: 4 °C,-20 °C

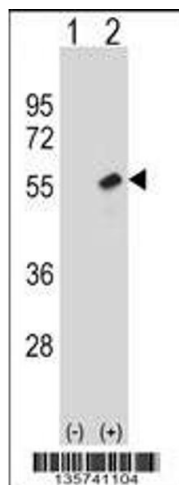
---

Storage Comment: Store at 4°C for three months and -20°C, stable for up to one year. As with all antibodies care should be taken to avoid repeated freeze thaw cycles. Antibodies should not be exposed to prolonged high temperatures.



#### Western Blotting

**Image 1.** Western blot analysis in CEM cell line lysates (35ug/lane).



#### Western Blotting

**Image 2.** Western blot analysis of RBBP7 using rabbit polyclonal RBBP7 Antibody using 293 cell lysates (2 ug/lane) either nontransfected (Lane 1) or transiently transfected (Lane 2) with the RBBP7 gene.