

Datasheet for ABIN5532020
anti-RBM12 antibody (AA 575-603)[Go to Product page](#)

3 Images

Overview

Quantity:	400 µL
Target:	RBM12
Binding Specificity:	AA 575-603
Reactivity:	Human, Mouse
Host:	Rabbit
Clonality:	Polyclonal
Conjugate:	This RBM12 antibody is un-conjugated
Application:	Western Blotting (WB), Immunohistochemistry (Paraffin-embedded Sections) (IHC (p))

Product Details

Immunogen:	This RBM12 antibody is generated from rabbits immunized with a KLH conjugated synthetic peptide between 575-603 amino acids from the Central region of human RBM12.
Isotype:	Ig Fraction
Purification:	This antibody is purified through a protein A column, followed by peptide affinity purification.

Target Details

Target:	RBM12
Alternative Name:	RBM12 (RBM12 Products)
Background:	This gene encodes a protein that contains several RNA-binding motifs, potential transmembrane domains, and proline-rich regions. This gene and the gene for copine I overlap at map location 20q11.21. Alternative splicing in the 5' UTR results in four transcript variants. All

Target Details

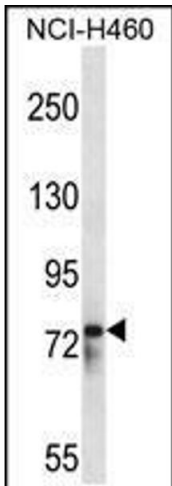
	variants encode the same protein.
Molecular Weight:	97 kDa
Gene ID:	10137
UniProt:	Q9NTZ6

Application Details

Application Notes:	For WB starting dilution is: 1:1000
	For IHC-P starting dilution is: 1:10~50
Restrictions:	For Research Use only

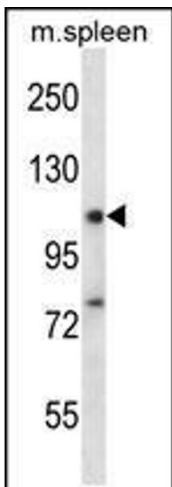
Handling

Format:	Liquid
Concentration:	0.5 mg/mL
Buffer:	Supplied in PBS with 0.09 % (W/V) sodium azide.
Preservative:	Sodium azide
Precaution of Use:	This product contains Sodium azide: a POISONOUS AND HAZARDOUS SUBSTANCE which should be handled by trained staff only.
Storage:	4 °C, -20 °C
Storage Comment:	Store at 4°C for three months and -20°C, stable for up to one year. As with all antibodies care should be taken to avoid repeated freeze thaw cycles. Antibodies should not be exposed to prolonged high temperatures.



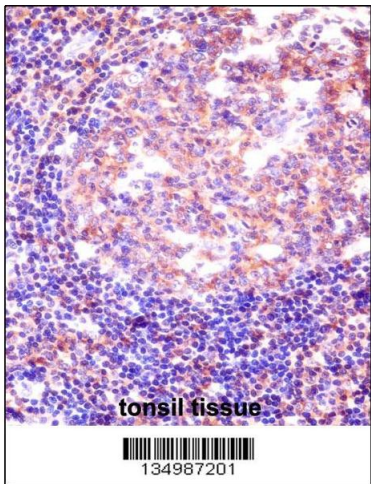
Western Blotting

Image 1. Western blot analysis in NCI-H460 cell line lysates (35ug/lane).



Western Blotting

Image 2. Western blot analysis in mouse spleen tissue lysates (35ug/lane).



Immunohistochemistry

Image 3. RBM12 Antibody immunohistochemistry analysis in formalin fixed and paraffin embedded human tonsil tissue followed by peroxidase conjugation of the secondary antibody and DAB staining.