

Datasheet for ABIN5532028
anti-RGMB antibody (C-Term)[Go to Product page](#)

3 Images

Overview

Quantity:	400 µL
Target:	RGMB
Binding Specificity:	AA 376-406, C-Term
Reactivity:	Human, Mouse
Host:	Rabbit
Clonality:	Polyclonal
Conjugate:	This RGMB antibody is un-conjugated
Application:	Western Blotting (WB), Immunohistochemistry (Paraffin-embedded Sections) (IHC (p))

Product Details

Immunogen:	This DRAGON (RGMB) antibody is generated from rabbits immunized with a KLH conjugated synthetic peptide between 376-406 amino acids from the C-terminal region of human DRAGON (RGMB).
Isotype:	Ig Fraction
Purification:	This antibody is purified through a protein G column, followed by dialysis against PBS.

Target Details

Target:	RGMB
Alternative Name:	DRAGON (RGMB Products)
Background:	Repulsive Guidance Molecule B (RGMB) is primarily expressed in the central nervous system. RGM A and B both appear at every level of the developing neural axis, where they colocalize to a

Target Details

large extent in the mantle layer, although only RGMA appears in the neuroepithelium, and only RGMB in the peripheral nervous system. During development, both RGMA and B appear also in lung and in limb cartilage, while RGMB has additional expression domains in pancreas.

Molecular Weight: 48 kDa

Gene ID: 285704

UniProt: [Q6NW40](#)

Application Details

Application Notes: For WB starting dilution is: 1:2000

For IHC-P starting dilution is: 1:10~50

Restrictions: For Research Use only

Handling

Format: Liquid

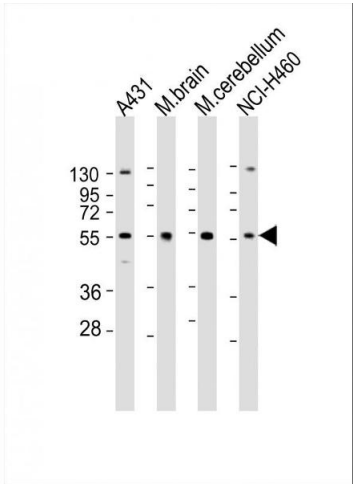
Buffer: Supplied in PBS with 0.09 % (W/V) sodium azide.

Preservative: Sodium azide

Precaution of Use: This product contains Sodium azide: a POISONOUS AND HAZARDOUS SUBSTANCE which should be handled by trained staff only.

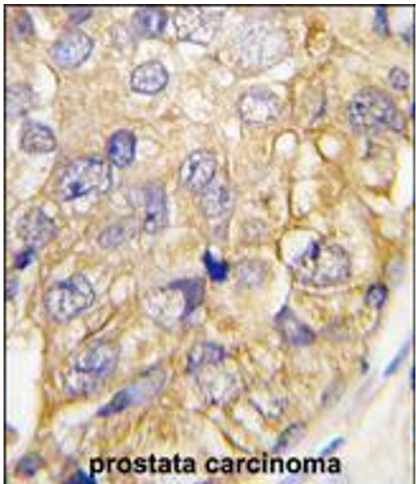
Storage: 4 °C, -20 °C

Storage Comment: Store at 4°C for three months and -20°C, stable for up to one year. As with all antibodies care should be taken to avoid repeated freeze thaw cycles. Antibodies should not be exposed to prolonged high temperatures.



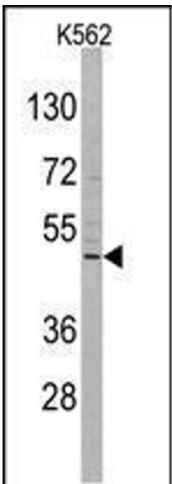
Western Blotting

Image 1. Western Blot at 1:2000 dilution Lane 1: A431 whole cell lysate Lane 2: mouse brain lysate Lane 3: mouse cerebellum lysate Lane 4: NCI-H460 whole cell lysate Lysates/proteins at 20 ug per lane.



Immunohistochemistry

Image 2. Formalin-fixed and paraffin-embedded human prostata carcinoma tissue reacted with DRAGON (RGMB) , which was peroxidase-conjugated to the secondary antibody, followed by DAB staining.



Western Blotting

Image 3. Western blot analysis of DRAGON (RGMB) Antibody in K562 cell line lysates (35ug/lane)