

Datasheet for ABIN5532046  
**anti-RNF144A antibody (AA 156-184)**[Go to Product page](#)

## 2 Images

## Overview

Quantity:	400 µL
Target:	RNF144A
Binding Specificity:	AA 156-184
Reactivity:	Human
Host:	Rabbit
Clonality:	Polyclonal
Conjugate:	This RNF144A antibody is un-conjugated
Application:	Western Blotting (WB), Immunohistochemistry (Paraffin-embedded Sections) (IHC (p))

## Product Details

Immunogen:	This RNF144A antibody is generated from rabbits immunized with a KLH conjugated synthetic peptide between 156-184 amino acids from the Central region of human RNF144A.
Isotype:	Ig Fraction
Purification:	This antibody is purified through a protein A column, followed by peptide affinity purification.

## Target Details

Target:	RNF144A
Alternative Name:	RNF144A ( <a href="#">RNF144A Products</a> )
Background:	The protein encoded by this protein contains a RING finger, a motif known to be involved in protein-DNA and protein-protein interactions. The mouse counterpart of this protein has been shown to interact with Ube2l3/UbcM4, which is an ubiquitin-conjugating enzyme involved in

## Target Details

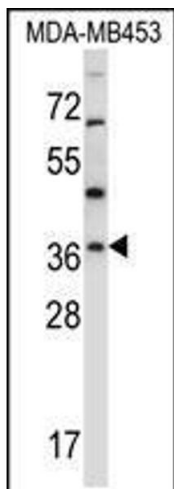
	embryonic development.
Molecular Weight:	33 kDa
Gene ID:	9781
UniProt:	<a href="#">P50876</a>

## Application Details

Application Notes:	For WB starting dilution is: 1:1000
	For IHC-P starting dilution is: 1:10~50
Restrictions:	For Research Use only

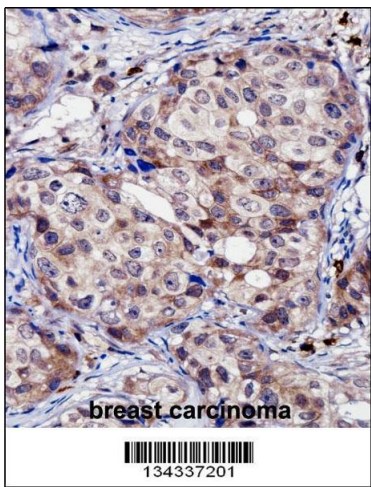
## Handling

Format:	Liquid
Concentration:	0.5 mg/mL
Buffer:	Supplied in PBS with 0.09 % (W/V) sodium azide.
Preservative:	Sodium azide
Precaution of Use:	This product contains Sodium azide: a POISONOUS AND HAZARDOUS SUBSTANCE which should be handled by trained staff only.
Storage:	4 °C, -20 °C
Storage Comment:	Store at 4°C for three months and -20°C, stable for up to one year. As with all antibodies care should be taken to avoid repeated freeze thaw cycles. Antibodies should not be exposed to prolonged high temperatures.



### Western Blotting

**Image 1.** Western blot analysis in MDA-MB453 cell line lysates (35ug/lane).



### Immunohistochemistry

**Image 2.** RNF144A Antibody immunohistochemistry analysis in formalin fixed and paraffin embedded human breast carcinoma followed by peroxidase conjugation of the secondary antibody and DAB staining.