

Datasheet for ABIN5532049  
**anti-RNF34 antibody (C-Term)**



[Go to Product page](#)

1 Image

## Overview

Quantity:	400 µL
Target:	RNF34
Binding Specificity:	AA 283-311, C-Term
Reactivity:	Human
Host:	Rabbit
Clonality:	Polyclonal
Conjugate:	This RNF34 antibody is un-conjugated
Application:	Western Blotting (WB)

## Product Details

Immunogen:	This RNF34 antibody is generated from rabbits immunized with a KLH conjugated synthetic peptide between 283-311 amino acids from the C-terminal region of human RNF34.
Isotype:	Ig Fraction
Purification:	This antibody is purified through a protein A column, followed by peptide affinity purification.

## Target Details

Target:	RNF34
Alternative Name:	RNF34 ( <a href="#">RNF34 Products</a> )
Background:	The protein encoded by this gene contains a RINF finger, a motif known to be involved in protein-protein and protein-DNA interactions. This protein interacts with DNAJA3/hTid-1, which is a DnaJ protein reported to function as a modulator of apoptosis. Overexpression of this gene

## Target Details

in Hela cells was shown to confer the resistance to TNF-alpha induced apoptosis, suggesting an anti-apoptotic function of this protein. This protein can be cleaved by caspase-3 during the induction of apoptosis. Alternatively spliced transcript variants encoding distinct isoforms have been reported.

Molecular Weight: 42 kDa

Gene ID: 80196

UniProt: [Q969K3](#)

## Application Details

Application Notes: For WB starting dilution is: 1:1000

Restrictions: For Research Use only

## Handling

Format: Liquid

Concentration: 0.5 mg/mL

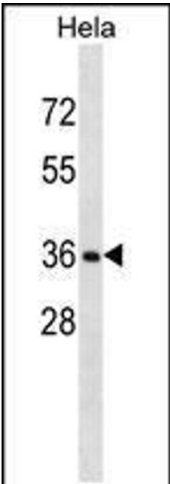
Buffer: Supplied in PBS with 0.09 % (W/V) sodium azide.

Preservative: Sodium azide

Precaution of Use: This product contains Sodium azide: a POISONOUS AND HAZARDOUS SUBSTANCE which should be handled by trained staff only.

Storage: 4 °C,-20 °C

Storage Comment: Store at 4°C for three months and -20°C, stable for up to one year. As with all antibodies care should be taken to avoid repeated freeze thaw cycles. Antibodies should not be exposed to prolonged high temperatures.



Western Blotting

**Image 1.** Western blot analysis in Hela cell line lysates (35ug/lane).