

Datasheet for ABIN5532073
anti-Recoverin antibody (C-Term)



[Go to Product page](#)

2 Images

Overview

Quantity:	400 µL
Target:	Recoverin (RCVRN)
Binding Specificity:	AA 169-200, C-Term
Reactivity:	Human
Host:	Rabbit
Clonality:	Polyclonal
Conjugate:	This Recoverin antibody is un-conjugated
Application:	Western Blotting (WB), Immunohistochemistry (Paraffin-embedded Sections) (IHC (p))

Product Details

Immunogen:	This Recoverin antibody is generated from rabbits immunized with a KLH conjugated synthetic peptide between 169-200 amino acids from the C-terminal region of human Recoverin.
Isotype:	Ig Fraction
Purification:	This antibody is prepared by Saturated Ammonium Sulfate (SAS) precipitation followed by dialysis

Target Details

Target:	Recoverin (RCVRN)
Alternative Name:	Recoverin (RCVRN Products)
Background:	Recoverin belongs to a high-affinity calcium-binding family that includes neuronal calcium sensor-1, visinin-like proteins (VILIPs), guanylate cyclase-activating proteins (GCAPs), and Kv-

Target Details

channel interacting proteins (KchIPs). Features common to this family include four calcium-binding EF-hand domains, and an N-terminal myristoylation sequence. This family of proteins has been implicated in a broad range of cellular signaling functions, including phototransduction and neurotransmitter release, lipid metabolism, gene expression, and ion channel regulation. Myristoylation, the post-translational addition of a fatty acid tail, has been shown to have functional significance for other calcium-binding protein family members. Recoverin is subject to the posttranslational modification of myristoylation. Binding of calcium to recoverin elicits a change in conformation that exposes the buried hydrophobic myristoyl moiety to interaction with cell membranes and other cellular proteins.

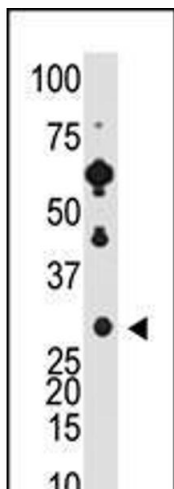
Molecular Weight:	23 kDa
Gene ID:	5957
UniProt:	P35243
Pathways:	Regulation of G-Protein Coupled Receptor Protein Signaling, Phototransduction

Application Details

Application Notes:	For WB starting dilution is: 1:1000 For IHC-P starting dilution is: 1:50~100
Restrictions:	For Research Use only

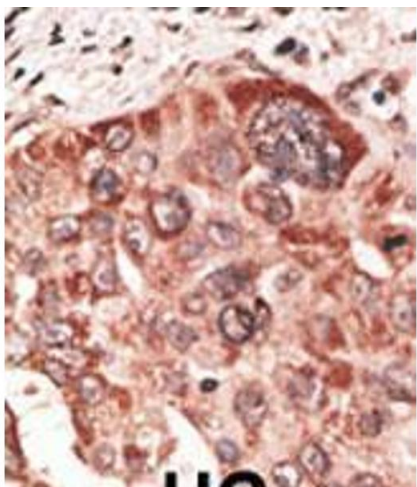
Handling

Format:	Liquid
Buffer:	Supplied in PBS with 0.09 % (W/V) sodium azide.
Preservative:	Sodium azide
Precaution of Use:	This product contains Sodium azide: a POISONOUS AND HAZARDOUS SUBSTANCE which should be handled by trained staff only.
Storage:	4 °C,-20 °C
Storage Comment:	Store at 4°C for three months and -20°C, stable for up to one year. As with all antibodies care should be taken to avoid repeated freeze thaw cycles. Antibodies should not be exposed to prolonged high temperatures.



Western Blotting

Image 1. Antibody is used in Western blot to detect Recoverin in Y79 cell lysate.



Immunohistochemistry

Image 2. Formalin-fixed and paraffin-embedded human cancer tissue reacted with the primary antibody, which was peroxidase-conjugated to the secondary antibody, followed by DAB staining. BC = breast carcinoma; HC = hepatocarcinoma.