

Datasheet for ABIN5532096

**anti-SAFB2 antibody (AA 529-558)**[Go to Product page](#)**1** Image

## Overview

Quantity:	400 µL
Target:	SAFB2
Binding Specificity:	AA 529-558
Reactivity:	Human
Host:	Rabbit
Clonality:	Polyclonal
Conjugate:	This SAFB2 antibody is un-conjugated
Application:	Western Blotting (WB)

## Product Details

Immunogen:	This SAFB2 antibody is generated from rabbits immunized with a KLH conjugated synthetic peptide between 529-558 amino acids from the Central region of human SAFB2.
Isotype:	Ig Fraction
Purification:	This antibody is purified through a protein A column, followed by peptide affinity purification.

## Target Details

Target:	SAFB2
Alternative Name:	SAFB2 ( <a href="#">SAFB2 Products</a> )
Background:	SAFB2 binds to scaffold/matrix attachment region (S/MAR) DNA. Can function as an estrogen receptor corepressor and can also inhibit cell proliferation.

Target Details

Molecular Weight:	107 kDa
Gene ID:	9667
UniProt:	<a href="#">Q14151</a>

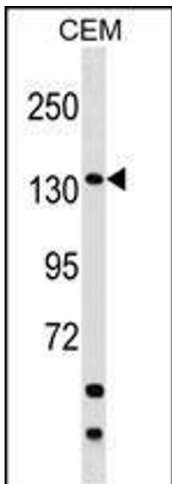
Application Details

Application Notes:	For WB starting dilution is: 1:1000
Restrictions:	For Research Use only

Handling

Format:	Liquid
Concentration:	0.45 mg/mL
Buffer:	Supplied in PBS with 0.09 % (W/V) sodium azide.
Preservative:	Sodium azide
Precaution of Use:	This product contains Sodium azide: a POISONOUS AND HAZARDOUS SUBSTANCE which should be handled by trained staff only.
Storage:	4 °C,-20 °C
Storage Comment:	Store at 4°C for three months and -20°C, stable for up to one year. As with all antibodies care should be taken to avoid repeated freeze thaw cycles. Antibodies should not be exposed to prolonged high temperatures.

Images



**Western Blotting**

**Image 1.** Western blot analysis in CEM cell line lysates (35ug/lane).