

Datasheet for ABIN5532107  
**anti-SF3B2 antibody (AA 539-568)**



[Go to Product page](#)

1 Image

## Overview

Quantity:	400 µL
Target:	SF3B2
Binding Specificity:	AA 539-568
Reactivity:	Human, Mouse, Rat
Host:	Rabbit
Clonality:	Polyclonal
Conjugate:	This SF3B2 antibody is un-conjugated
Application:	Western Blotting (WB)

## Product Details

Immunogen:	This SF3B2 antibody is generated from rabbits immunized with a KLH conjugated synthetic peptide between 539-568 amino acids from the Central region of human SF3B2.
Isotype:	Ig Fraction
Purification:	This antibody is purified through a protein A column, followed by peptide affinity purification.

## Target Details

Target:	SF3B2
Alternative Name:	SF3B2 ( <a href="#">SF3B2 Products</a> )
Background:	This gene encodes subunit 2 of the splicing factor 3b protein complex. Splicing factor 3b, together with splicing factor 3a and a 12S RNA unit, forms the U2 small nuclear ribonucleoproteins complex (U2 snRNP). The splicing factor 3b/3a complex binds pre-mRNA

## Target Details

upstream of the intron's branch site in a sequence-independent manner and may anchor the U2 snRNP to the pre-mRNA. Splicing factor 3b is also a component of the minor U12-type spliceosome. Subunit 2 associates with pre-mRNA upstream of the branch site at the anchoring site. Subunit 2 also interacts directly with subunit 4 of the splicing factor 3b complex. Subunit 2 is a highly hydrophilic protein with a proline-rich N-terminus and a glutamate-rich stretch in the C-terminus. [provided by RefSeq].

Molecular Weight: 100 kDa

Gene ID: 10992

UniProt: [Q13435](#)

## Application Details

Application Notes: For WB starting dilution is: 1:2000

Restrictions: For Research Use only

## Handling

Format: Liquid

Concentration: 0.44 mg/mL

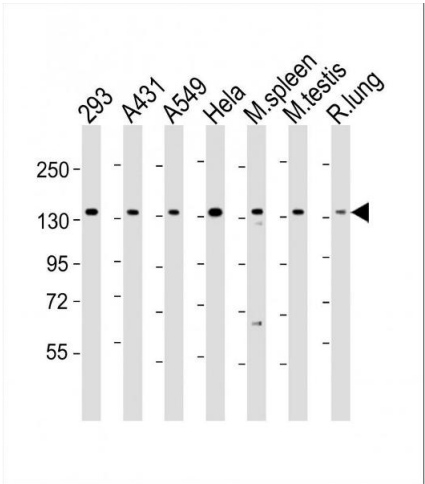
Buffer: Supplied in PBS with 0.09 % (W/V) sodium azide.

Preservative: Sodium azide

Precaution of Use: This product contains Sodium azide: a POISONOUS AND HAZARDOUS SUBSTANCE which should be handled by trained staff only.

Storage: 4 °C, -20 °C

Storage Comment: Store at 4°C for three months and -20°C, stable for up to one year. As with all antibodies care should be taken to avoid repeated freeze thaw cycles. Antibodies should not be exposed to prolonged high temperatures.



Western Blotting

**Image 1.** Western Blot at 1:2000 dilution Lane 1: 293 whole cell lysate Lane 2: A431 whole cell lysate Lane 3: A549 whole cell lysate Lane 4: Hela whole cell lysate Lane 5: mouse spleen lysate Lane 6: mouse testis lysate Lane 7: rat lung lysate Lysates/proteins at 20 ug per lane.