



[Go to Product page](#)

Datasheet for ABIN5532212
anti-SNCAIP antibody (C-Term)

2 Images

Overview

Quantity:	400 µL
Target:	SNCAIP
Binding Specificity:	AA 593-622, C-Term
Reactivity:	Human, Mouse
Host:	Rabbit
Clonality:	Polyclonal
Conjugate:	This SNCAIP antibody is un-conjugated
Application:	Western Blotting (WB)

Product Details

Immunogen:	This Synphilin-1 (SNCAIP) antibody is generated from rabbits immunized with a KLH conjugated synthetic peptide between 593-622 amino acids from the C-terminal region of human Synphilin-1 (SNCAIP).
Isotype:	Ig Fraction
Purification:	This antibody is prepared by Saturated Ammonium Sulfate (SAS) precipitation followed by dialysis

Target Details

Target:	SNCAIP
Alternative Name:	Synphilin-1 (SNCAIP Products)
Background:	Parkinson is the second most common neurodegenerative disease after Alzheimers. About 1

Target Details

percent of people over the age of 65 and 3 percent of people over the age of 75 are affected by the disease. The mutation is the most common cause of Parkinson disease identified to date. Synuclein alpha interacting protein (Synphilin-1) contains several protein-protein interaction domains and interacts with alpha synuclein in neurons. Mutations of SNCAIP have been linked to Parkinson disease. The amino acid sequence of synphilin-1 shows extensive homology with its human counterpart, especially in regions containing ankyrin-like motifs and the coiled-coil domain. Expression of mouse synphilin-1 in tissues is similar to its human counterpart. Synphilin-1 has an important role in the formation of aggregates and cytotoxicity in Parkinson disease and that Dornin may be involved in the pathogenic process by ubiquitylation of synphilin-1. Role of synphilin-1 in synaptic function and protein degradation and in the molecular mechanisms leading to neurodegeneration in Parkinson disease

Molecular Weight:	100 kDa
-------------------	---------

Gene ID:	9627
----------	------

UniProt:	Q9Y6H5
----------	------------------------

Application Details

Application Notes:	For WB starting dilution is: 1:1000
--------------------	-------------------------------------

Restrictions:	For Research Use only
---------------	-----------------------

Handling

Format:	Liquid
---------	--------

Concentration:	2 mg/mL
----------------	---------

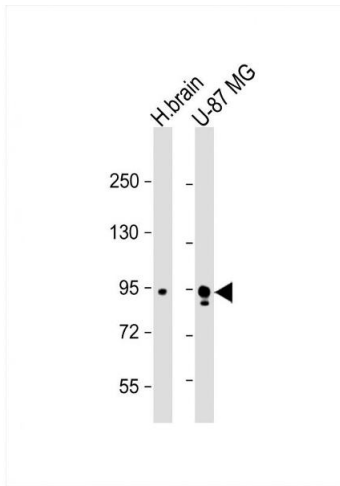
Buffer:	Supplied in PBS with 0.09 % (W/V) sodium azide.
---------	---

Preservative:	Sodium azide
---------------	--------------

Precaution of Use:	This product contains Sodium azide: a POISONOUS AND HAZARDOUS SUBSTANCE which should be handled by trained staff only.
--------------------	--

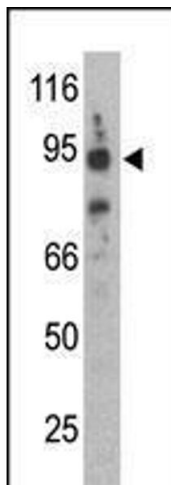
Storage:	4 °C,-20 °C
----------	-------------

Storage Comment:	Store at 4°C for three months and -20°C, stable for up to one year. As with all antibodies care should be taken to avoid repeated freeze thaw cycles. Antibodies should not be exposed to prolonged high temperatures.
------------------	--



Western Blotting

Image 1. Western Blot at 1:1000 dilution Lane 1: human brain lysate Lane 2: U-87 MG whole cell lysate Lysates/proteins at 20 ug per lane.



Western Blotting

Image 2. Antibody is used in Western blot to detect Synphilin-1 in mouse brain lysate.