

Datasheet for ABIN5532256
anti-TP53RK antibody (AA 100-128)[Go to Product page](#)

3 Images

Overview

Quantity:	400 µL
Target:	TP53RK
Binding Specificity:	AA 100-128
Reactivity:	Human, Mouse
Host:	Rabbit
Clonality:	Polyclonal
Conjugate:	This TP53RK antibody is un-conjugated
Application:	Western Blotting (WB)

Product Details

Immunogen:	This Mouse Tp53rk antibody is generated from rabbits immunized with a KLH conjugated synthetic peptide between 100-128 amino acids from the Central region of mouse Tp53rk.
Isotype:	Ig Fraction
Purification:	This antibody is purified through a protein A column, followed by peptide affinity purification.

Target Details

Target:	TP53RK
Alternative Name:	Tp53rk (TP53RK Products)
Background:	Tp53rk is a protein kinase that phosphorylates 'Ser-15' of p53/TP53 protein and may therefore participate in its activation (By similarity).

Target Details

Molecular Weight:	27 kDa
Gene ID:	76367
UniProt:	Q99PW4

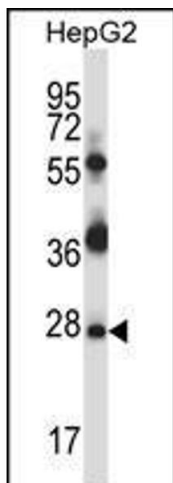
Application Details

Application Notes:	For WB starting dilution is: 1:1000
Restrictions:	For Research Use only

Handling

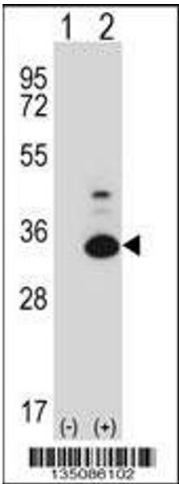
Format:	Liquid
Concentration:	0.5 mg/mL
Buffer:	Supplied in PBS with 0.09 % (W/V) sodium azide.
Preservative:	Sodium azide
Precaution of Use:	This product contains Sodium azide: a POISONOUS AND HAZARDOUS SUBSTANCE which should be handled by trained staff only.
Storage:	4 °C, -20 °C
Storage Comment:	Store at 4°C for three months and -20°C, stable for up to one year. As with all antibodies care should be taken to avoid repeated freeze thaw cycles. Antibodies should not be exposed to prolonged high temperatures.

Images



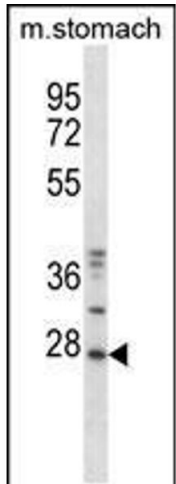
Western Blotting

Image 1. Western blot analysis in HepG2 cell line lysates (35ug/lane).



Western Blotting

Image 2. Western blot analysis of Tp53rk using rabbit polyclonal Mouse Tp53rk Antibody using 293 cell lysates (2 ug/lane) either nontransfected (Lane 1) or transiently transfected (Lane 2) with the Tp53rk gene.



Western Blotting

Image 3. Western blot analysis in mouse stomach tissue lysates (35ug/lane).