

Datasheet for ABIN5532340  
**anti-UBE4A antibody (AA 451-479)**

## 3 Images

[Go to Product page](#)

## Overview

Quantity:	400 µL
Target:	UBE4A
Binding Specificity:	AA 451-479
Reactivity:	Human
Host:	Rabbit
Clonality:	Polyclonal
Conjugate:	This UBE4A antibody is un-conjugated
Application:	Western Blotting (WB), Immunohistochemistry (Paraffin-embedded Sections) (IHC (p))

## Product Details

Immunogen:	This UBE4A antibody is generated from rabbits immunized with a KLH conjugated synthetic peptide between 451-479 amino acids from the Central region of human UBE4A.
Isotype:	Ig Fraction
Purification:	This antibody is purified through a protein A column, followed by peptide affinity purification.

## Target Details

Target:	UBE4A
Alternative Name:	UBE4A ( <a href="#">UBE4A Products</a> )
Background:	The modification of proteins with ubiquitin is an important cellular mechanism for targeting abnormal or short-lived proteins for degradation. Ubiquitination involves at least three classes of enzymes: ubiquitin-activating enzymes, or E1s, ubiquitin-conjugating enzymes, or E2s, and

## Target Details

ubiquitin-protein ligases, or E3s. This gene encodes an additional conjugation factor, E4, which is involved in multiubiquitin chain assembly.

Molecular Weight: 123 kDa

Gene ID: 9354

UniProt: [Q14139](#)

## Application Details

Application Notes: For WB starting dilution is: 1:1000

For IHC-P starting dilution is: 1:10~50

Restrictions: For Research Use only

## Handling

Format: Liquid

Concentration: 0.43 mg/mL

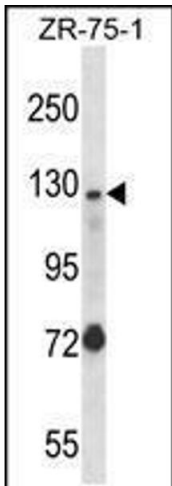
Buffer: Supplied in PBS with 0.09 % (W/V) sodium azide.

Preservative: Sodium azide

Precaution of Use: This product contains Sodium azide: a POISONOUS AND HAZARDOUS SUBSTANCE which should be handled by trained staff only.

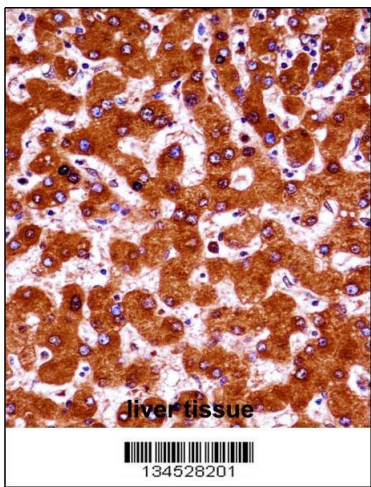
Storage: 4 °C, -20 °C

Storage Comment: Store at 4°C for three months and -20°C, stable for up to one year. As with all antibodies care should be taken to avoid repeated freeze thaw cycles. Antibodies should not be exposed to prolonged high temperatures.



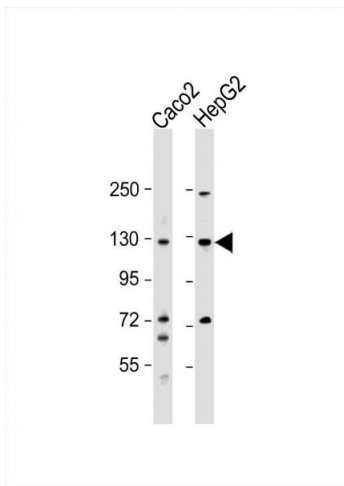
#### Western Blotting

**Image 1.** Western blot analysis in ZR-75-1 cell line lysates (35ug/lane).



#### Immunohistochemistry

**Image 2.** UBE4A Antibody immunohistochemistry analysis in formalin fixed and paraffin embedded human liver tissue followed by peroxidase conjugation of the secondary antibody and DAB staining.



#### Western Blotting

**Image 3.** Western Blot at 1:1000 dilution Lane 1: Caco2 whole cell lysate Lane 2: HepG2 whole cell lysate Lysates/proteins at 20 ug per lane.