



[Go to Product page](#)

Datasheet for ABIN5532371
anti-WHSC1 antibody (C-Term)

2 Images

Overview

Quantity:	400 µL
Target:	WHSC1
Binding Specificity:	AA 1061-1089, C-Term
Reactivity:	Human
Host:	Rabbit
Clonality:	Polyclonal
Conjugate:	This WHSC1 antibody is un-conjugated
Application:	Western Blotting (WB)

Product Details

Immunogen:	This WHSC1 antibody is generated from rabbits immunized with a KLH conjugated synthetic peptide between 1061-1089 amino acids from the C-terminal region of human WHSC1.
Isotype:	Ig Fraction
Purification:	This antibody is purified through a protein A column, followed by peptide affinity purification.

Target Details

Target:	WHSC1
Alternative Name:	WHSC1 (WHSC1 Products)
Background:	This gene encodes a protein that contains four domains present in other developmental proteins: a PWWP domain, an HMG box, a SET domain, and a PHD-type zinc finger. It is expressed ubiquitously in early development. Wolf-Hirschhorn syndrome (WHS) is a

Target Details

malformation syndrome associated with a hemizygous deletion of the distal short arm of chromosome 4. This gene maps to the 165 kb WHS critical region and has also been involved in the chromosomal translocation t(4,14)(p16.3,q32.3) in multiple myelomas. Alternative splicing of this gene results in multiple transcript variants encoding different isoforms. Some transcript variants are nonsense-mediated mRNA (NMD) decay candidates, hence not represented as reference sequences.

Molecular Weight: 152 kDa

Gene ID: 7468

UniProt: [O96028](#)

Pathways: [SARS-CoV-2 Protein Interactome](#)

Application Details

Application Notes: For WB starting dilution is: 1:1000

Restrictions: For Research Use only

Handling

Format: Liquid

Concentration: 0.5 mg/mL

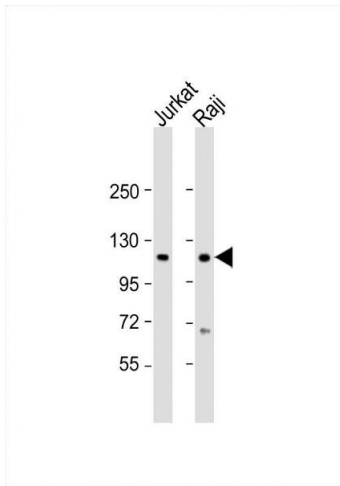
Buffer: Supplied in PBS with 0.09 % (W/V) sodium azide.

Preservative: Sodium azide

Precaution of Use: This product contains Sodium azide: a POISONOUS AND HAZARDOUS SUBSTANCE which should be handled by trained staff only.

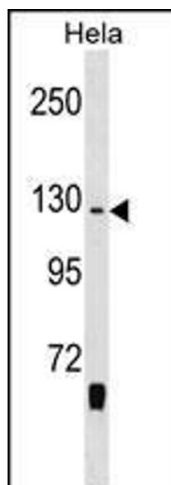
Storage: 4 °C, -20 °C

Storage Comment: Store at 4°C for three months and -20°C, stable for up to one year. As with all antibodies care should be taken to avoid repeated freeze thaw cycles. Antibodies should not be exposed to prolonged high temperatures.



Western Blotting

Image 1. Western Blot at 1:2000 dilution Lane 1: Jurkat whole cell lysate Lane 2: Raji whole cell lysate Lysates/proteins at 20 ug per lane.



Western Blotting

Image 2. Western blot analysis in HeLa cell line lysates (35ug/lane).