

Datasheet for ABIN5532385
anti-YY1 antibody (AA 268-297)



[Go to Product page](#)

2 Images

Overview

Quantity:	200 µL
Target:	YY1
Binding Specificity:	AA 268-297
Reactivity:	Human, Mouse
Host:	Rabbit
Clonality:	Polyclonal
Conjugate:	This YY1 antibody is un-conjugated
Application:	Western Blotting (WB), Immunohistochemistry (Paraffin-embedded Sections) (IHC (p))

Product Details

Immunogen:	This YY1 antibody is generated from rabbits immunized with a KLH conjugated synthetic peptide between 268-297 amino acids from the Central region of human YY1.
Isotype:	Ig Fraction
Purification:	This antibody is prepared by Saturated Ammonium Sulfate (SAS) precipitation followed by dialysis

Target Details

Target:	YY1
Alternative Name:	YY1 (YY1 Products)
Background:	YY1 is a ubiquitously distributed transcription factor belonging to the GLI-Kruppel class of zinc finger proteins. The protein is involved in repressing and activating a diverse number of

Target Details

promoters. YY1 may direct histone deacetylases and histone acetyltransferases to a promoter in order to activate or repress the promoter, thus implicating histone modification in the function of YY1.

Molecular Weight: 45 kDa

Gene ID: 7528

UniProt: [P25490](#)

Application Details

Application Notes: For WB starting dilution is: 1:1000

For IHC-P starting dilution is: 1:50~100

Restrictions: For Research Use only

Handling

Format: Liquid

Concentration: 1.2 mg/mL

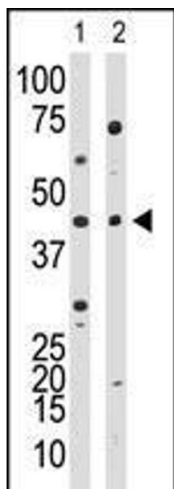
Buffer: Supplied in PBS with 0.09 % (W/V) sodium azide.

Preservative: Sodium azide

Precaution of Use: This product contains Sodium azide: a POISONOUS AND HAZARDOUS SUBSTANCE which should be handled by trained staff only.

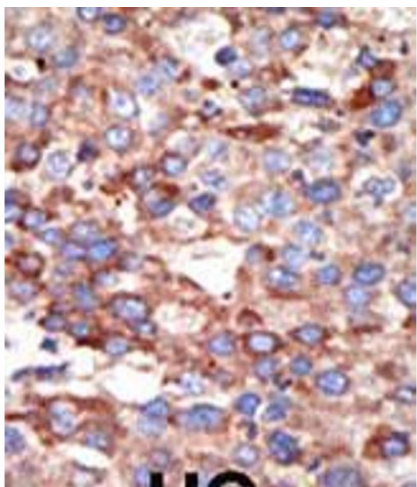
Storage: 4 °C,-20 °C

Storage Comment: Store at 4°C for three months and -20°C, stable for up to one year. As with all antibodies care should be taken to avoid repeated freeze thaw cycles. Antibodies should not be exposed to prolonged high temperatures.



Western Blotting

Image 1. Western blot analysis of anti-YY1 Ctr Pab in HL60 cell lysate (lane 1) and in mouse kidney tissue lysate (lane 2)



Immunohistochemistry

Image 2. Formalin-fixed and paraffin-embedded human cancer tissue reacted with the primary antibody, which was peroxidase-conjugated to the secondary antibody, followed by DAB staining. BC = breast carcinoma; HC = hepatocarcinoma.