

Datasheet for ABIN5532502
anti-CSDC2 antibody (AA 76-105)[Go to Product page](#)

2 Images

Overview

| | |
|----------------------|--|
| Quantity: | 400 µL |
| Target: | CSDC2 |
| Binding Specificity: | AA 76-105 |
| Reactivity: | Human |
| Host: | Rabbit |
| Clonality: | Polyclonal |
| Conjugate: | This CSDC2 antibody is un-conjugated |
| Application: | Western Blotting (WB), Immunohistochemistry (Paraffin-embedded Sections) (IHC (p)) |

Product Details

| | |
|---------------|--|
| Immunogen: | This PIPPIN antibody is generated from rabbits immunized with a KLH conjugated synthetic peptide between 76-105 amino acids from the Central region of human PIPPIN. |
| Isotype: | Ig Fraction |
| Purification: | This antibody is purified through a protein A column, followed by peptide affinity purification. |

Target Details

| | |
|-------------------|--|
| Target: | CSDC2 |
| Alternative Name: | PIPPIN (CSDC2 Products) |
| Background: | RNA-binding factor which binds specifically to the very 3'-UTR ends of both histone H1 and H3.3 mRNAs, encompassing the polyadenylation signal. Might play a central role in the negative regulation of histone variant synthesis in the developing brain (By similarity). |

Target Details

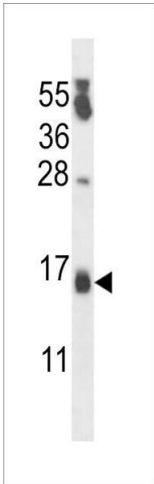
| | |
|-------------------|------------------------|
| Molecular Weight: | 17 kDa |
| Gene ID: | 27254 |
| UniProt: | Q9Y534 |

Application Details

| | |
|--------------------|--|
| Application Notes: | For WB starting dilution is: 1:1000 For IHC-P starting dilution is: 1:10~50 |
| Restrictions: | For Research Use only |

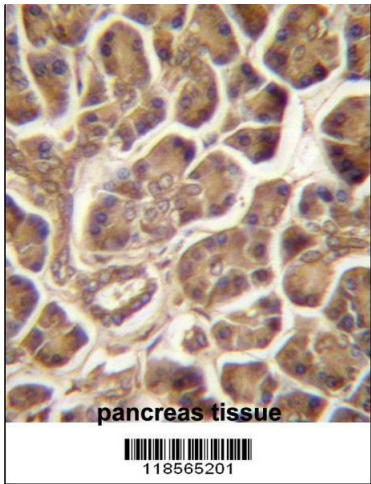
Handling

| | |
|--------------------|--|
| Format: | Liquid |
| Concentration: | 0.5 mg/mL |
| Buffer: | Supplied in PBS with 0.09 % (W/V) sodium azide. |
| Preservative: | Sodium azide |
| Precaution of Use: | This product contains Sodium azide: a POISONOUS AND HAZARDOUS SUBSTANCE which should be handled by trained staff only. |
| Storage: | 4 °C,-20 °C |
| Storage Comment: | Store at 4°C for three months and -20°C, stable for up to one year. As with all antibodies care should be taken to avoid repeated freeze thaw cycles. Antibodies should not be exposed to prolonged high temperatures. |



Western Blotting

Image 1. Western blot analysis in MDA-MB231 cell line lysates (35ug/lane).



Immunohistochemistry

Image 2. PIPPIN Antibody immunohistochemistry analysis in formalin fixed and paraffin embedded human pancreas tissue followed by peroxidase conjugation of the secondary antibody and DAB staining.