

Datasheet for ABIN5532512
anti-CK1 epsilon antibody (C-Term)

2 Images

[Go to Product page](#)

Overview

Quantity:	400 µL
Target:	CK1 epsilon (CSNK1E)
Binding Specificity:	AA 283-310, C-Term
Reactivity:	Mouse
Host:	Rabbit
Clonality:	Polyclonal
Conjugate:	This CK1 epsilon antibody is un-conjugated
Application:	Western Blotting (WB), Immunohistochemistry (Paraffin-embedded Sections) (IHC (p))

Product Details

Immunogen:	This Mouse Csnk1e antibody is generated from rabbits immunized with a KLH conjugated synthetic peptide between 283-310 amino acids from the C-terminal region of mouse Csnk1e.
Isotype:	Ig Fraction
Purification:	This antibody is purified through a protein A column, followed by peptide affinity purification.

Target Details

Target:	CK1 epsilon (CSNK1E)
Alternative Name:	Csnk1e (CSNK1E Products)
Background:	Casein kinases are operationally defined by their preferential utilization of acidic proteins such as caseins as substrates. Can phosphorylate a large number of proteins. Participates in Wnt signaling. Phosphorylates DVL1. Central component of the circadian clock. May act as a

Target Details

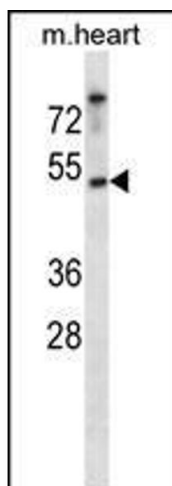
	negative regulator of circadian rhythmicity by phosphorylating PER1 and PER2. Retains PER1 in the cytoplasm. Inhibits cytokine-induced granulolytic differentiation.
Molecular Weight:	47 kDa
Gene ID:	27373
UniProt:	Q9JMK2
Pathways:	Hedgehog Signaling, M Phase

Application Details

Application Notes:	For WB starting dilution is: 1:1000
	For IHC-P starting dilution is: 1:10~50
Restrictions:	For Research Use only

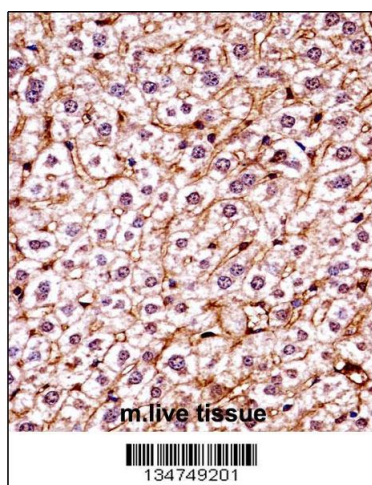
Handling

Format:	Liquid
Concentration:	0.4 mg/mL
Buffer:	Supplied in PBS with 0.09 % (W/V) sodium azide.
Preservative:	Sodium azide
Precaution of Use:	This product contains Sodium azide: a POISONOUS AND HAZARDOUS SUBSTANCE which should be handled by trained staff only.
Storage:	4 °C,-20 °C
Storage Comment:	Store at 4°C for three months and -20°C, stable for up to one year. As with all antibodies care should be taken to avoid repeated freeze thaw cycles. Antibodies should not be exposed to prolonged high temperatures.



Western Blotting

Image 1. Western blot analysis in mouse heart tissue lysates (35ug/lane).



Immunohistochemistry

Image 2. Mouse Csnk1e Antibody immunohistochemistry analysis in formalin fixed and paraffin embedded mouse live tissue followed by peroxidase conjugation of the secondary antibody and DAB staining.