

Datasheet for ABIN5532526
anti-CRTAP antibody (N-Term)[Go to Product page](#)

3 Images

Overview

Quantity:	400 µL
Target:	CRTAP
Binding Specificity:	AA 31-59, N-Term
Reactivity:	Human
Host:	Rabbit
Clonality:	Polyclonal
Conjugate:	This CRTAP antibody is un-conjugated
Application:	Western Blotting (WB), Immunofluorescence (IF)

Product Details

Immunogen:	This CRTAP antibody is generated from rabbits immunized with a KLH conjugated synthetic peptide between 31-59 amino acids from the N-terminal region of human CRTAP.
Isotype:	Ig Fraction
Purification:	This antibody is purified through a protein A column, followed by peptide affinity purification.

Target Details

Target:	CRTAP
Alternative Name:	CRTAP (CRTAP Products)
Background:	The protein encoded by this gene is similar to the chicken and mouse CRTAP genes. The encoded protein is a scaffolding protein that may influence the activity of at least one member of the cytohesin/ARNO family in response to specific cellular stimuli. Defects in this gene are

Target Details

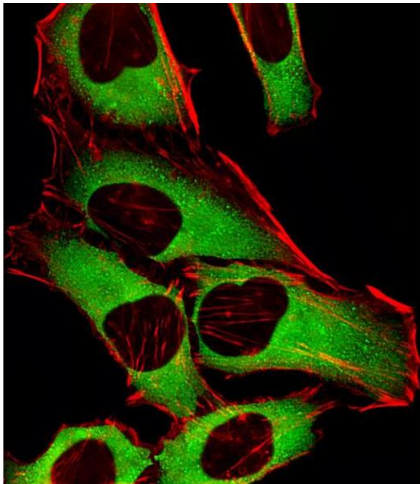
	associated with osteogenesis imperfecta, a connective tissue disorder characterized by bone fragility and low bone mass.
Molecular Weight:	47 kDa
Gene ID:	10491
UniProt:	075718

Application Details

Application Notes:	For IF starting dilution is: 1:25 For WB starting dilution is: 1:1000
Restrictions:	For Research Use only

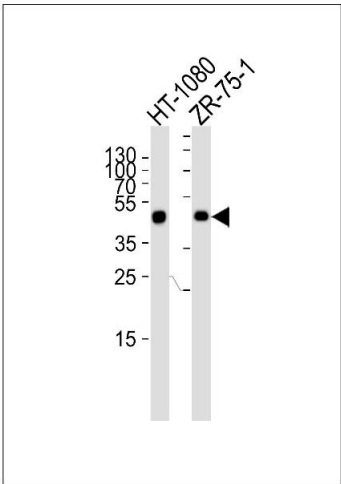
Handling

Format:	Liquid
Buffer:	Supplied in PBS with 0.09 % (W/V) sodium azide.
Preservative:	Sodium azide
Precaution of Use:	This product contains Sodium azide: a POISONOUS AND HAZARDOUS SUBSTANCE which should be handled by trained staff only.
Storage:	4 °C, -20 °C
Storage Comment:	Store at 4°C for three months and -20°C, stable for up to one year. As with all antibodies care should be taken to avoid repeated freeze thaw cycles. Antibodies should not be exposed to prolonged high temperatures.



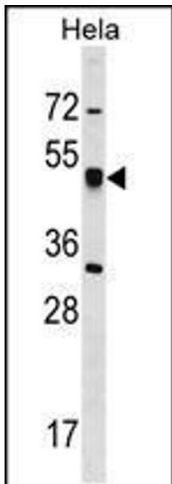
Immunofluorescence

Image 1. Fluorescent image of HeLa cells stained with CRTAP Antibody (N-term). Antibody was diluted at 1:25 dilution. An Alexa Fluor 488-conjugated goat anti-rabbit IgG at 1:400 dilution was used as the secondary antibody (green). Cytoplasmic actin was counterstained with Alexa Fluor 555 conjugated with Phalloidin (red).



Western Blotting

Image 2. Western blot analysis of lysates from HT-1080, ZR-75-1 cell line (from left to right), using CRTAP Antibody at 1:1000 at each lane.



Western Blotting

Image 3. Western blot analysis in HeLa cell line lysates (35ug/lane).