

Datasheet for ABIN5532556  
**anti-EGF antibody (AA 1048-1077)**



[Go to Product page](#)

3 Images

## Overview

Quantity:	400 µL
Target:	EGF
Binding Specificity:	AA 1048-1077
Reactivity:	Human, Mouse
Host:	Rabbit
Clonality:	Polyclonal
Conjugate:	This EGF antibody is un-conjugated
Application:	Western Blotting (WB), Immunohistochemistry (Paraffin-embedded Sections) (IHC (p))

## Product Details

Immunogen:	This EGFR antibody is generated from rabbits immunized with a KLH conjugated synthetic peptide between 1048-1077 amino acids from human EGFR.
Isotype:	Ig Fraction
Purification:	This antibody is purified through a protein A column, followed by peptide affinity purification.

## Target Details

Target:	EGF
Alternative Name:	EGF ( <a href="#">EGF Products</a> )
Background:	The epidermal growth factor receptor is the cell-surface receptor for members of the epidermal growth factor family (EGF-family) of extracellular protein ligands. The epidermal growth factor receptor is a member of the ErbB family of receptors, a subfamily of four closely related

## Target Details

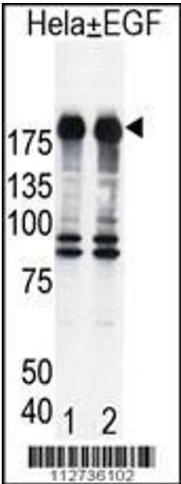
	receptor tyrosine kinases: EGFR (ErbB-1), HER2/c-neu (ErbB-2), Her 3 (ErbB-3) and Her 4 (ErbB-4). Mutations affecting EGFR expression or activity could result in cancer.
Molecular Weight:	134 kDa
Gene ID:	1956
UniProt:	<a href="#">P00533</a>
Pathways:	<a href="#">NF-kappaB Signaling</a> , <a href="#">RTK Signaling</a> , <a href="#">Fc-epsilon Receptor Signaling Pathway</a> , <a href="#">EGFR Signaling Pathway</a> , <a href="#">Neurotrophin Signaling Pathway</a> , <a href="#">Regulation of Carbohydrate Metabolic Process</a> , <a href="#">Hepatitis C</a> , <a href="#">Protein targeting to Nucleus</a> , <a href="#">Interaction of EGFR with phospholipase C-gamma</a> , <a href="#">Thromboxane A2 Receptor Signaling</a> , <a href="#">EGFR Downregulation</a>

## Application Details

Application Notes:	For WB starting dilution is: 1:1000
	For IHC-P starting dilution is: 1:10~50
Restrictions:	For Research Use only

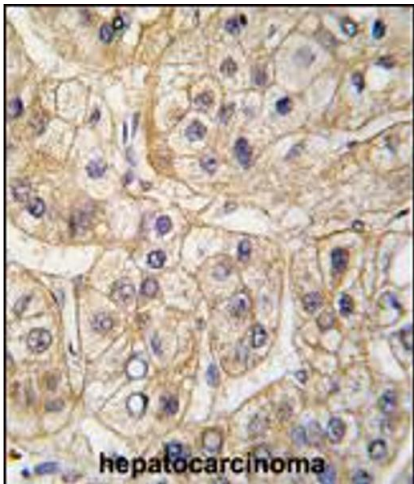
## Handling

Format:	Liquid
Buffer:	Supplied in PBS with 0.09 % (W/V) sodium azide.
Preservative:	Sodium azide
Precaution of Use:	This product contains Sodium azide: a POISONOUS AND HAZARDOUS SUBSTANCE which should be handled by trained staff only.
Storage:	4 °C,-20 °C
Storage Comment:	Store at 4°C for three months and -20°C, stable for up to one year. As with all antibodies care should be taken to avoid repeated freeze thaw cycles. Antibodies should not be exposed to prolonged high temperatures.



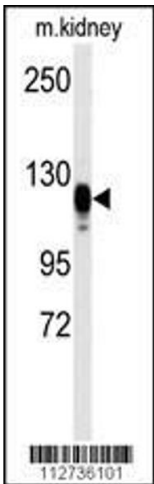
Western Blotting

**Image 1.** Western blot analysis of EGFR in HeLa cell lysates, either induced (Lane 1) or noninduced with EGF (Lane 2).



Immunohistochemistry

**Image 2.** Formalin-fixed and paraffin-embedded human hepatocarcinoma tissue reacted with EGFR Antibody (S1070), which was peroxidase-conjugated to the secondary antibody, followed by DAB staining.



Western Blotting

**Image 3.** Western blot analysis of anti-EGFR Antibody (S1070) in kidney heart tissue lysates (35ug/lane)