

Datasheet for ABIN5532604
anti-IL-26 antibody (AA 88-115)



[Go to Product page](#)

1 Image

Overview

Quantity:	400 µL
Target:	IL-26 (IL26)
Binding Specificity:	AA 88-115
Reactivity:	Human
Host:	Rabbit
Clonality:	Polyclonal
Conjugate:	This IL-26 antibody is un-conjugated
Application:	Western Blotting (WB)

Product Details

Immunogen:	This IL26 antibody is generated from rabbits immunized with a KLH conjugated synthetic peptide between 88-115 amino acids from the Central region of human IL26.
Isotype:	Ig Fraction
Purification:	This antibody is purified through a protein A column, followed by peptide affinity purification.

Target Details

Target:	IL-26 (IL26)
Alternative Name:	IL26 (IL26 Products)
Background:	IL26 is a member of the IL10 family of cytokines. It is a secreted protein and may function as a homodimer. This protein is thought to contribute to the transformed phenotype of T cells after infection by herpesvirus samimiri.

Target Details

Molecular Weight:	20 kDa
Gene ID:	55801
UniProt:	Q9NPH9

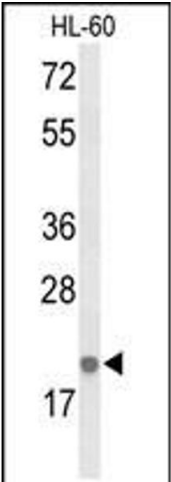
Application Details

Application Notes:	For WB starting dilution is: 1:1000
Restrictions:	For Research Use only

Handling

Format:	Liquid
Concentration:	0.5 mg/mL
Buffer:	Supplied in PBS with 0.09 % (W/V) sodium azide.
Preservative:	Sodium azide
Precaution of Use:	This product contains Sodium azide: a POISONOUS AND HAZARDOUS SUBSTANCE which should be handled by trained staff only.
Storage:	4 °C, -20 °C
Storage Comment:	Store at 4°C for three months and -20°C, stable for up to one year. As with all antibodies care should be taken to avoid repeated freeze thaw cycles. Antibodies should not be exposed to prolonged high temperatures.

Images



Western Blotting

Image 1. Western blot analysis of IL26 Antibody in HL-60 cell line lysates (35ug/lane)