

Datasheet for ABIN5532616  
**anti-MRC2 antibody (AA 798-827)**



[Go to Product page](#)

1 Image

## Overview

Quantity:	400 µL
Target:	MRC2
Binding Specificity:	AA 798-827
Reactivity:	Human
Host:	Rabbit
Clonality:	Polyclonal
Conjugate:	This MRC2 antibody is un-conjugated
Application:	Western Blotting (WB)

## Product Details

Immunogen:	This MRC2 antibody is generated from rabbits immunized with a KLH conjugated synthetic peptide between 798-827 amino acids from the Central region of human MRC2.
Isotype:	Ig Fraction
Purification:	This antibody is purified through a protein A column, followed by peptide affinity purification.

## Target Details

Target:	MRC2
Alternative Name:	MRC2 ( <a href="#">MRC2 Products</a> )
Background:	MRC2 is a recycling endocytic receptor that functions in cell motility and remodeling of the extracellular matrix by promoting cell migration and uptake of collagens for intracellular degradation (Wienke et al., 2007 [PubMed 17974964]).[supplied by OMIM].

## Target Details

Molecular Weight:	167 kDa
Gene ID:	9902
UniProt:	<a href="#">Q9UBG0</a>

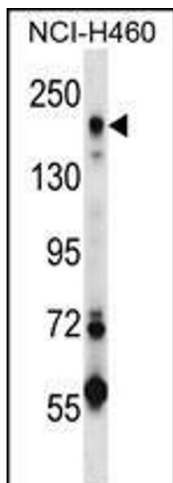
## Application Details

Application Notes:	For WB starting dilution is: 1:1000
Restrictions:	For Research Use only

## Handling

Format:	Liquid
Concentration:	0.5 mg/mL
Buffer:	Supplied in PBS with 0.09 % (W/V) sodium azide.
Preservative:	Sodium azide
Precaution of Use:	This product contains Sodium azide: a POISONOUS AND HAZARDOUS SUBSTANCE which should be handled by trained staff only.
Storage:	4 °C, -20 °C
Storage Comment:	Store at 4°C for three months and -20°C, stable for up to one year. As with all antibodies care should be taken to avoid repeated freeze thaw cycles. Antibodies should not be exposed to prolonged high temperatures.

## Images



### Western Blotting

**Image 1.** Western blot analysis in NCI-H460 cell line lysates (35ug/lane).