

Datasheet for ABIN5532623
anti-MYT1 antibody (C-Term)

2 Images

[Go to Product page](#)

Overview

Quantity:	400 µL
Target:	MYT1
Binding Specificity:	AA 452-482, C-Term
Reactivity:	Human
Host:	Rabbit
Clonality:	Polyclonal
Conjugate:	This MYT1 antibody is un-conjugated
Application:	Western Blotting (WB)

Product Details

Immunogen:	This MYT1 (PKMYT1) antibody is generated from rabbits immunized with a KLH conjugated synthetic peptide between 452-482 amino acids from the C-terminal region of human MYT1 (PKMYT1).
Isotype:	Ig Fraction
Purification:	This antibody is prepared by Saturated Ammonium Sulfate (SAS) precipitation followed by dialysis

Target Details

Target:	MYT1
Alternative Name:	MYT1 (MYT1 Products)
Background:	The protein encoded by this gene is a member of the serine/threonine protein kinase family.

Target Details

This kinase preferentially phosphorylates and inactivates cell division cycle 2 protein (CDC2), and thus negatively regulates cell cycle G2/M transition. This kinase is associated with the membrane throughout the cell cycle. Its activity is highly regulated during the cell cycle. Protein kinases AKT1/PKB and PLK (Polo-like kinase) have been shown to phosphorylate and regulate the activity of this kinase. Alternatively spliced transcript variants encoding distinct isoforms have been reported. Transcript Variant: This variant (1) encodes the longer isoform (1).

Molecular Weight: 55 kDa

Gene ID: 9088

UniProt: [Q99640](#)

Pathways: [Cell Division Cycle](#)

Application Details

Application Notes: For WB starting dilution is: 1:1000

Restrictions: For Research Use only

Handling

Format: Liquid

Concentration: 2 mg/mL

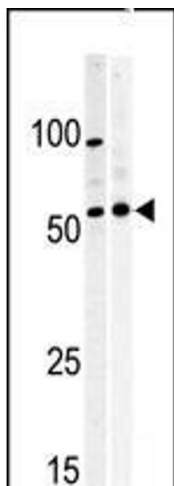
Buffer: Supplied in PBS with 0.09 % (W/V) sodium azide.

Preservative: Sodium azide

Precaution of Use: This product contains Sodium azide: a POISONOUS AND HAZARDOUS SUBSTANCE which should be handled by trained staff only.

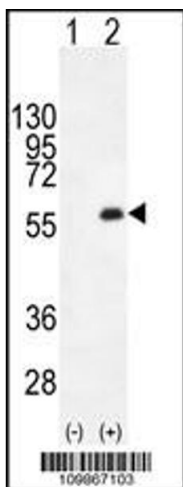
Storage: 4 °C, -20 °C

Storage Comment: Store at 4°C for three months and -20°C, stable for up to one year. As with all antibodies care should be taken to avoid repeated freeze thaw cycles. Antibodies should not be exposed to prolonged high temperatures.



Western Blotting

Image 1. Western blot analysis of anti-PKMYT1 Pabin A375(left) and Y79 (right)cell line lysate.



Western Blotting

Image 2. Western blot analysis of PKMYT1 using rabbit polyclonal PKMYT1 C-term using 293 cell lysates (2 ug/lane) either nontransfected (Lane 1) or transiently transfected (Lane 2) with the PKMYT1 gene.