

Datasheet for ABIN5532741
anti-TMPRSS13 antibody (C-Term)[Go to Product page](#)

2 Images

Overview

Quantity:	400 µL
Target:	TMPRSS13
Binding Specificity:	AA 431-460, C-Term
Reactivity:	Human
Host:	Rabbit
Clonality:	Polyclonal
Conjugate:	This TMPRSS13 antibody is un-conjugated
Application:	Western Blotting (WB), Immunohistochemistry (Paraffin-embedded Sections) (IHC (p))

Product Details

Immunogen:	This TMPRSS13 antibody is generated from rabbits immunized with a KLH conjugated synthetic peptide between 431-460 amino acids from the C-terminal region of human TMPRSS13.
Isotype:	Ig Fraction
Purification:	This antibody is purified through a protein A column, followed by peptide affinity purification.

Target Details

Target:	TMPRSS13
Alternative Name:	TMPRSS13 (TMPRSS13 Products)
Background:	TMPRSS13 is a cell membrane serine protease. It is a member of a larger family of membrane attached serine proteases, a poorly defined group that includes TMPRSS11A, B, C, D, E, F,

Target Details

Hepsin, Corin, Matriptase 1, 2 and 3. TMPRSS13 has a domain structure of an aminoterminal cytoplasmic domain, which is much longer than the other TMPRSS family members, followed by a transmembrane domain, an SRCR domain (Scavenger receptor cysteine rich), an LDL receptor like domain, another SRCR domain, followed by the trypsin like serine protease domain. The cytoplasmic domain contains a number of tandem repeat elements, the function of which is not clear, but which may play a regulatory role.

Molecular Weight: 63 kDa

Gene ID: 84000

UniProt: [Q9BYE2](#)

Application Details

Application Notes: For WB starting dilution is: 1:1000

For IHC-P starting dilution is: 1:10~50

Restrictions: For Research Use only

Handling

Format: Liquid

Concentration: 0.5 mg/mL

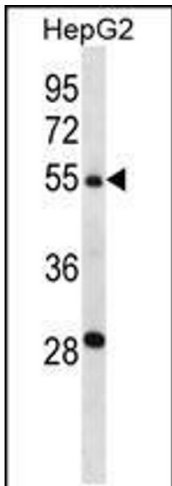
Buffer: Supplied in PBS with 0.09 % (W/V) sodium azide.

Preservative: Sodium azide

Precaution of Use: This product contains Sodium azide: a POISONOUS AND HAZARDOUS SUBSTANCE which should be handled by trained staff only.

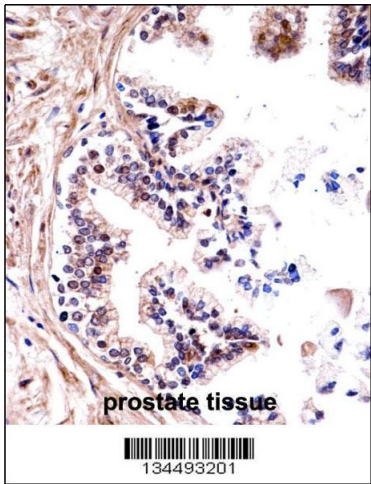
Storage: 4 °C, -20 °C

Storage Comment: Store at 4°C for three months and -20°C, stable for up to one year. As with all antibodies care should be taken to avoid repeated freeze thaw cycles. Antibodies should not be exposed to prolonged high temperatures.



Western Blotting

Image 1. Western blot analysis in HepG2 cell line lysates (35ug/lane).



Immunohistochemistry

Image 2. TMPRSS13 Antibody immunohistochemistry analysis in formalin fixed and paraffin embedded human prostate tissue followed by peroxidase conjugation of the secondary antibody and DAB staining.