

Datasheet for ABIN5532808
anti-Actin antibody (AA 189-218)

3 Images

[Go to Product page](#)

Overview

Quantity:	400 µL
Target:	Actin
Binding Specificity:	AA 189-218
Reactivity:	Human
Host:	Rabbit
Clonality:	Polyclonal
Conjugate:	This Actin antibody is un-conjugated
Application:	Western Blotting (WB), Immunohistochemistry (Paraffin-embedded Sections) (IHC (p))

Product Details

Immunogen:	This Actin (ACTB/ACTC) antibody is generated from rabbits immunized with a KLH conjugated synthetic peptide between 189-218 amino acids from the Central region of human Actin (ACTB/ACTC).
Isotype:	Ig Fraction
Purification:	This antibody is prepared by Saturated Ammonium Sulfate (SAS) precipitation followed by dialysis

Target Details

Target:	Actin
Abstract:	Actin Products
Background:	Actins are highly conserved proteins that are involved in cell motility, structure, and integrity.

Target Details

ACTB/ACTC are nonmuscle cytoskeletal actins and major constituents of the contractile apparatus. Defects in ACTB are a cause of juvenile-onset dystonia. Defects in ACTC have been associated with idiopathic dilated cardiomyopathy (IDC) and familial hypertrophic cardiomyopathy (FHC).

Molecular Weight: 42 kDa

Gene ID: 70

UniProt: [P68032](#)

Application Details

Application Notes: For WB starting dilution is: 1:1000

For IHC-P starting dilution is: 1:10~50

Restrictions: For Research Use only

Handling

Format: Liquid

Concentration: 1.8 mg/mL

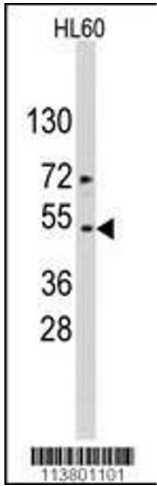
Buffer: Supplied in PBS with 0.09 % (W/V) sodium azide.

Preservative: Sodium azide

Precaution of Use: This product contains Sodium azide: a POISONOUS AND HAZARDOUS SUBSTANCE which should be handled by trained staff only.

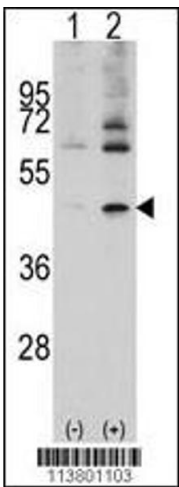
Storage: 4 °C, -20 °C

Storage Comment: Store at 4°C for three months and -20°C, stable for up to one year. As with all antibodies care should be taken to avoid repeated freeze thaw cycles. Antibodies should not be exposed to prolonged high temperatures.



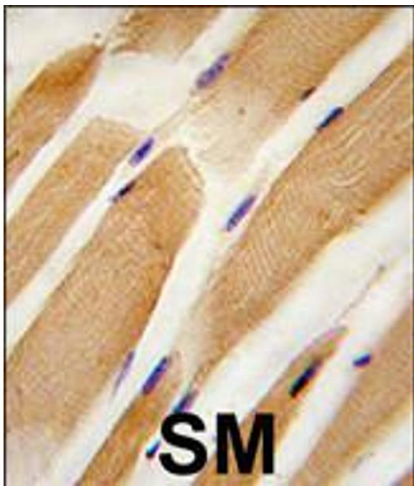
Western Blotting

Image 1. Western blot analysis of ACTB/ACTC Antibody in HL60 cell line lysates (35ug/lane).



Western Blotting

Image 2. Western blot analysis of ACTB/ACTC using rabbit polyclonal ACTB/ACTC Antibody.293 cell lysates (2 ug/lane) either nontransfected (Lane 1) or transiently transfected with the ACTB/ACTC gene (Lane 2).



Immunohistochemistry

Image 3. Formalin-fixed and paraffin-embedded human skeletal muscle tissue reacted with ACTB/ACTC antibody, which was peroxidase-conjugated to the secondary antibody, followed by DAB staining.