

Datasheet for ABIN5532819
anti-AMOTL2 antibody (AA 126-152)[Go to Product page](#)

2 Images

Overview

Quantity:	400 µL
Target:	AMOTL2
Binding Specificity:	AA 126-152
Reactivity:	Human, Mouse
Host:	Rabbit
Clonality:	Polyclonal
Conjugate:	This AMOTL2 antibody is un-conjugated
Application:	Western Blotting (WB)

Product Details

Immunogen:	This AMOTL2 antibody is generated from rabbits immunized with a KLH conjugated synthetic peptide between 126-152 amino acids from the Central region of human AMOTL2.
Isotype:	Ig Fraction
Purification:	This antibody is purified through a protein A column, followed by peptide affinity purification.

Target Details

Target:	AMOTL2
Alternative Name:	AMOTL2 (AMOTL2 Products)
Background:	AMOTL2 is a protein that binds angiostatin, a circulating inhibitor of the formation of new blood vessels (angiogenesis). Angiomotin mediates angiostatin inhibition of endothelial cell migration and tube formation in vitro. The protein encoded by this gene is related to angiomotin and is a

Target Details

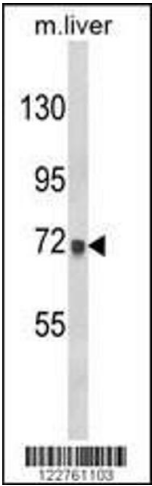
	member of the motins protein family.
Molecular Weight:	86 kDa
Gene ID:	51421
UniProt:	Q9Y2J4

Application Details

Application Notes:	For WB starting dilution is: 1:1000
Restrictions:	For Research Use only

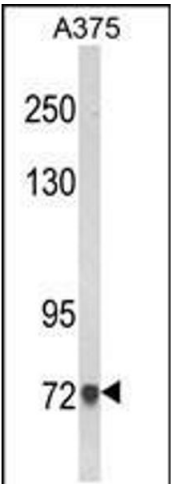
Handling

Format:	Liquid
Concentration:	0.5 mg/mL
Buffer:	Supplied in PBS with 0.09 % (W/V) sodium azide.
Preservative:	Sodium azide
Precaution of Use:	This product contains Sodium azide: a POISONOUS AND HAZARDOUS SUBSTANCE which should be handled by trained staff only.
Storage:	4 °C,-20 °C
Storage Comment:	Store at 4°C for three months and -20°C, stable for up to one year. As with all antibodies care should be taken to avoid repeated freeze thaw cycles. Antibodies should not be exposed to prolonged high temperatures.



Western Blotting

Image 1. Western blot analysis of AMOTL2 Antibody in mouse liver tissue lysates (35ug/lane)



Western Blotting

Image 2. Western blot analysis of AMOTL2 Antibody in A375 cell line lysates (35ug/lane)