

Datasheet for ABIN5532829
anti-Azurocidin antibody (AA 67-96)[Go to Product page](#)

2 Images

Overview

Quantity:	400 µL
Target:	Azurocidin (AZU1)
Binding Specificity:	AA 67-96
Reactivity:	Human
Host:	Rabbit
Clonality:	Polyclonal
Conjugate:	This Azurocidin antibody is un-conjugated
Application:	Western Blotting (WB)

Product Details

Immunogen:	This AZU1 antibody is generated from rabbits immunized with a KLH conjugated synthetic peptide between 67-96 amino acids from the Central region of human AZU1.
Isotype:	Ig Fraction
Purification:	This antibody is purified through a protein A column, followed by peptide affinity purification.

Target Details

Target:	Azurocidin (AZU1)
Alternative Name:	AZU1 (AZU1 Products)
Background:	Azurophil granules, specialized lysosomes of the neutrophil, contain at least 10 proteins implicated in the killing of microorganisms. The protein encoded by this gene is an azurophil granule antibiotic protein, with monocyte chemotactic and antibacterial activity. It is also an

Target Details

important multifunctional inflammatory mediator. This encoded protein is a member of the serine protease gene family but it is not a serine proteinase, because the active site serine and histidine residues are replaced. The genes encoding this protein, neutrophil elastase 2, and proteinase 3 are in a cluster located at chromosome 19pter. All 3 genes are expressed coordinately and their protein products are packaged together into azurophil granules during neutrophil differentiation.

Molecular Weight: 27 kDa

Gene ID: 566

UniProt: [P20160](#)

Application Details

Application Notes: For WB starting dilution is: 1:1000

Restrictions: For Research Use only

Handling

Format: Liquid

Concentration: 0.5 mg/mL

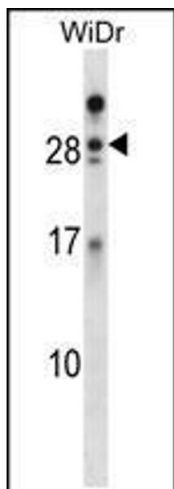
Buffer: Supplied in PBS with 0.09 % (W/V) sodium azide.

Preservative: Sodium azide

Precaution of Use: This product contains Sodium azide: a POISONOUS AND HAZARDOUS SUBSTANCE which should be handled by trained staff only.

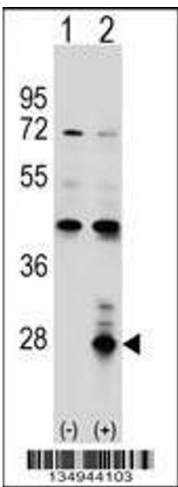
Storage: 4 °C, -20 °C

Storage Comment: Store at 4°C for three months and -20°C, stable for up to one year. As with all antibodies care should be taken to avoid repeated freeze thaw cycles. Antibodies should not be exposed to prolonged high temperatures.



Western Blotting

Image 1. Western blot analysis in WiDr cell line lysates (35ug/lane).



Western Blotting

Image 2. Western blot analysis of AZU1 using rabbit polyclonal AZU1 Antibody using 293 cell lysates (2 ug/lane) either nontransfected (Lane 1) or transiently transfected (Lane 2) with the AZU1 gene.