

Datasheet for ABIN5532851
anti-CEBPE antibody (C-Term)

3 Images

[Go to Product page](#)

Overview

Quantity:	400 µL
Target:	CEBPE
Binding Specificity:	AA 203-232, C-Term
Reactivity:	Human
Host:	Rabbit
Clonality:	Polyclonal
Conjugate:	This CEBPE antibody is un-conjugated
Application:	Western Blotting (WB)

Product Details

Immunogen:	This CEBPE antibody is generated from rabbits immunized with a KLH conjugated synthetic peptide between 203-232 amino acids from the C-terminal region of human CEBPE.
Isotype:	Ig Fraction
Purification:	This antibody is purified through a protein A column, followed by peptide affinity purification.

Target Details

Target:	CEBPE
Alternative Name:	CEBPE (CEBPE Products)
Background:	The protein encoded by this gene is a bZIP transcription factor which can bind as a homodimer to certain DNA regulatory regions. It can also form heterodimers with the related protein CEBP-delta. The encoded protein may be essential for terminal differentiation and functional

Target Details

maturation of committed granulocyte progenitor cells. Mutations in this gene have been associated with Specific Granule Deficiency, a rare congenital disorder. Multiple variants of this gene have been described, but the full-length nature of only one has been determined.

Molecular Weight: 31 kDa

Gene ID: 1053

UniProt: [Q15744](#)

Pathways: [Cellular Response to Molecule of Bacterial Origin](#)

Application Details

Application Notes: For WB starting dilution is: 1:1000

Restrictions: For Research Use only

Handling

Format: Liquid

Concentration: 0.5 mg/mL

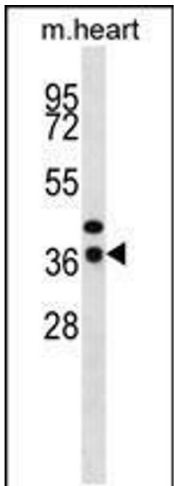
Buffer: Supplied in PBS with 0.09 % (W/V) sodium azide.

Preservative: Sodium azide

Precaution of Use: This product contains Sodium azide: a POISONOUS AND HAZARDOUS SUBSTANCE which should be handled by trained staff only.

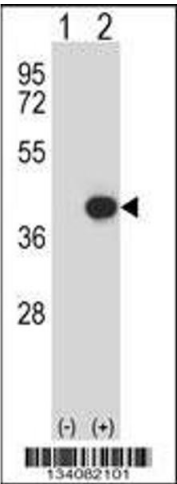
Storage: 4 °C, -20 °C

Storage Comment: Store at 4°C for three months and -20°C, stable for up to one year. As with all antibodies care should be taken to avoid repeated freeze thaw cycles. Antibodies should not be exposed to prolonged high temperatures.



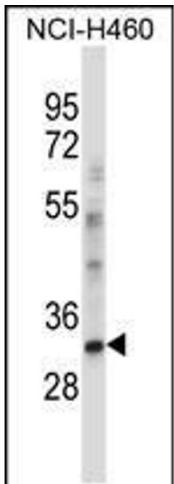
Western Blotting

Image 1. Western blot analysis in mouse heart tissue lysates (35ug/lane).



Western Blotting

Image 2. Western blot analysis of CEBPE using rabbit polyclonal CEBPE Antibody using 293 cell lysates (2 ug/lane) either nontransfected (Lane 1) or transiently transfected (Lane 2) with the CEBPE gene.



Western Blotting

Image 3. Western blot analysis in NCI-H460 cell line lysates (35ug/lane).