



[Go to Product page](#)

Datasheet for ABIN5532879

## anti-Cadherin 13 antibody (C-Term)

### 3 Images

#### Overview

Quantity:	400 µL
Target:	Cadherin 13 (CDH13)
Binding Specificity:	AA 589-617, C-Term
Reactivity:	Human
Host:	Rabbit
Clonality:	Polyclonal
Conjugate:	This Cadherin 13 antibody is un-conjugated
Application:	Western Blotting (WB), Flow Cytometry (FACS), Immunohistochemistry (Paraffin-embedded Sections) (IHC (p))

#### Product Details

Immunogen:	This H Cadherin (CDH13) antibody is generated from rabbits immunized with a KLH conjugated synthetic peptide between 589-617 amino acids from the C-terminal region of human H Cadherin (CDH13).
Isotype:	Ig Fraction
Purification:	This antibody is purified through a protein A column, followed by peptide affinity purification.

#### Target Details

Target:	Cadherin 13 (CDH13)
Alternative Name:	H Cadherin ( <a href="#">CDH13 Products</a> )
Background:	CDH13 is a member of the cadherin superfamily. This protein is a calcium dependent cell-cell

## Target Details

---

adhesion glycoprotein comprised of five extracellular cadherin repeats, a transmembrane region but, unlike the typical cadherin superfamily member, lacks the highly conserved cytoplasmic region. This particular cadherin is a putative mediator of cell-cell interaction in the heart and may act as a negative regulator of neural cell growth.

Molecular Weight: 78 kDa

Gene ID: 1012

UniProt: [P55290](#)

Pathways: [EGFR Signaling Pathway](#), [Cell-Cell Junction Organization](#)

## Application Details

---

Application Notes: For WB starting dilution is: 1:1000

For IHC-P starting dilution is: 1:10~50

For FACS starting dilution is: 1:10~50

Restrictions: For Research Use only

## Handling

---

Format: Liquid

Concentration: 0.45 mg/mL

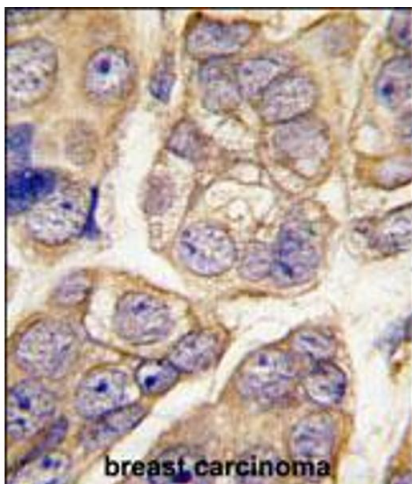
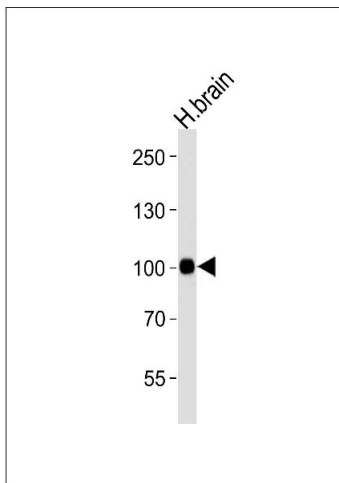
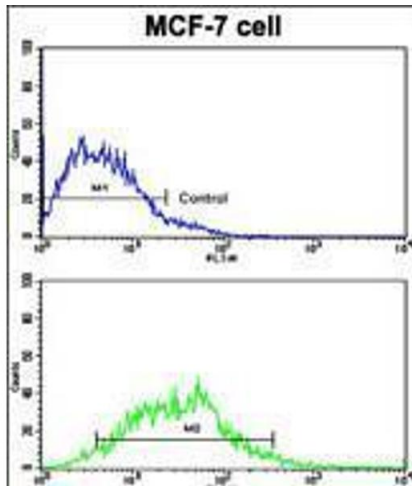
Buffer: Supplied in PBS with 0.09 % (W/V) sodium azide.

Preservative: Sodium azide

Precaution of Use: This product contains Sodium azide: a POISONOUS AND HAZARDOUS SUBSTANCE which should be handled by trained staff only.

Storage: 4 °C, -20 °C

Storage Comment: Store at 4°C for three months and -20°C, stable for up to one year. As with all antibodies care should be taken to avoid repeated freeze thaw cycles. Antibodies should not be exposed to prolonged high temperatures.



### Flow Cytometry

**Image 1.** Flow cytometric analysis of MCF-7 cells using H Cadherin (CDH13) Antibody (bottom histogram) compared to a negative control cell (top histogram). FITC-conjugated goat-anti-rabbit secondary antibodies were used for the analysis.

### Western Blotting

**Image 2.** Western blot analysis of lysate from human brain tissue lysate, using CDH13 Antibody at 1:1000 at each lane.

### Immunohistochemistry

**Image 3.** Formalin-fixed and paraffin-embedded human breast carcinoma tissue reacted with CDH13 antibody , which was peroxidase-conjugated to the secondary antibody, followed by DAB staining.