

Datasheet for ABIN5532921 **anti-IL1A antibody (C-Term)**

3 Images



[Go to Product page](#)

Overview

Quantity:	400 µL
Target:	IL1A
Binding Specificity:	AA 474-503, C-Term
Reactivity:	Human
Host:	Rabbit
Clonality:	Polyclonal
Conjugate:	This IL1A antibody is un-conjugated
Application:	Western Blotting (WB), Immunohistochemistry (Paraffin-embedded Sections) (IHC (p))

Product Details

Immunogen:	This IL1R antibody is generated from rabbits immunized with a KLH conjugated synthetic peptide between 474-503 amino acids from the C-terminal region of human IL1R.
Isotype:	Ig Fraction
Purification:	This antibody is purified through a protein A column, followed by peptide affinity purification.

Target Details

Target:	IL1A
Alternative Name:	IL1 (IL1A Products)
Background:	IL1R is a member of the interleukin 1 receptor family. An experiment with transient gene expression demonstrated that this receptor was incapable of binding to interleukin 1 alpha and interleukin 1 beta with high affinity. IL1R is a receptor for interleukin 1 family member 9 (IL1F9).

Target Details

Binding to the agonist leads to the activation of NF-kappa-B. The gene for this protein and four other interleukin 1 receptor family genes, including interleukin 1 receptor, type I (IL1R1), interleukin 1 receptor, type II (IL1R2), interleukin 1 receptor-like 1 (IL1RL1), and interleukin 18 receptor 1 (IL18R1), form a cytokine receptor gene cluster in a region mapped to chromosome 2q12.

Molecular Weight: 65 kDa

Gene ID: 3554

UniProt: [P14778](#)

Pathways: [NF-kappaB Signaling](#), [Autophagy](#), [Cancer Immune Checkpoints](#)

Application Details

Application Notes: For WB starting dilution is: 1:1000

For IHC-P starting dilution is: 1:10~50

Restrictions: For Research Use only

Handling

Format: Liquid

Concentration: 0.368 mg/mL

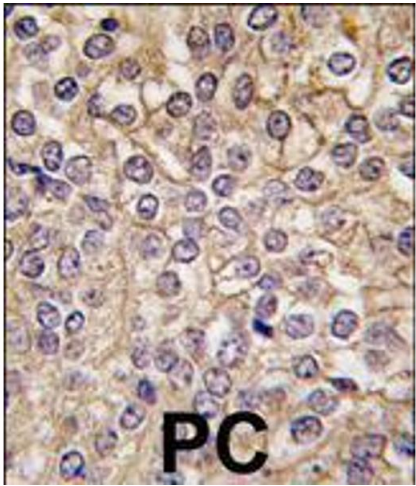
Buffer: Supplied in PBS with 0.09 % (W/V) sodium azide.

Preservative: Sodium azide

Precaution of Use: This product contains Sodium azide: a POISONOUS AND HAZARDOUS SUBSTANCE which should be handled by trained staff only.

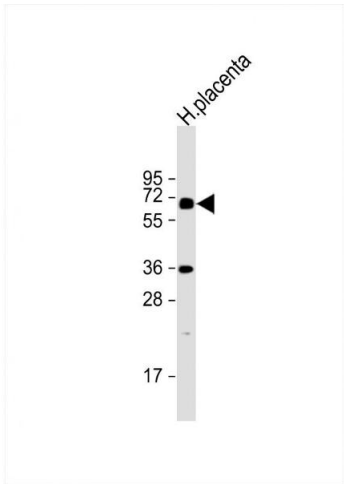
Storage: 4 °C,-20 °C

Storage Comment: Store at 4°C for three months and -20°C, stable for up to one year. As with all antibodies care should be taken to avoid repeated freeze thaw cycles. Antibodies should not be exposed to prolonged high temperatures.



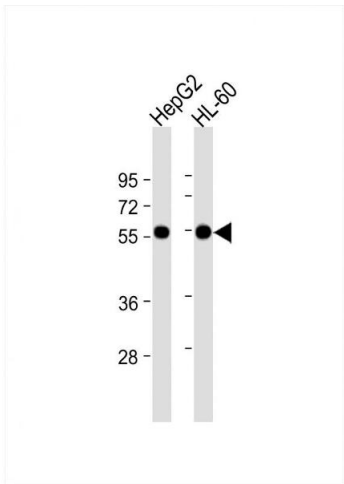
Immunohistochemistry

Image 1. Formalin-fixed and paraffin-embedded human prostata carcinoma tissue reacted with, which was peroxidase-conjugated to the secondary antibody, followed by DAB staining.



Western Blotting

Image 2. Western Blot at 1:2000 dilution + human placenta lysate Lysates/proteins at 20 ug per lane.



Western Blotting

Image 3. Western Blot at 1:1000 dilution Lane 1: HepG2 whole cell lysate Lane 2: HL-60 whole cell lysate Lysates/proteins at 20 ug per lane.