

Datasheet for ABIN5532962
anti-CysLTR1 antibody (AA 144-172)

2 Images

[Go to Product page](#)

Overview

Quantity:	400 µL
Target:	CysLTR1 (CYSLTR1)
Binding Specificity:	AA 144-172
Reactivity:	Human
Host:	Rabbit
Clonality:	Polyclonal
Conjugate:	This CysLTR1 antibody is un-conjugated
Application:	Western Blotting (WB), Immunohistochemistry (Paraffin-embedded Sections) (IHC (p))

Product Details

Immunogen:	This CYSLTR1 antibody is generated from rabbits immunized with a KLH conjugated synthetic peptide between 144-172 amino acids from the Central region of human CYSLTR1.
Isotype:	Ig Fraction
Purification:	This antibody is purified through a protein A column, followed by peptide affinity purification.

Target Details

Target:	CysLTR1 (CYSLTR1)
Alternative Name:	CYSLTR1 (CYSLTR1 Products)
Background:	The cysteinyl leukotrienes LTC4, LTD4, and LTE4 are important mediators of human bronchial asthma. Pharmacologic studies have determined that cysteinyl leukotrienes activate at least 2 receptors, the protein encoded by this gene and CYSLTR2. This encoded receptor is a member

Target Details

of the superfamily of G protein-coupled receptors. Activation of this receptor by LTD4 results in contraction and proliferation of smooth muscle, oedema, eosinophil migration and damage to the mucus layer in the lung.

Molecular Weight: 39 kDa

Gene ID: 10800

UniProt: [Q9Y271](#)

Application Details

Application Notes: For WB starting dilution is: 1:1000

For IHC-P starting dilution is: 1:10~50

Restrictions: For Research Use only

Handling

Format: Liquid

Concentration: 0.5 mg/mL

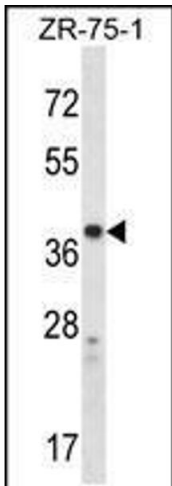
Buffer: Supplied in PBS with 0.09 % (W/V) sodium azide.

Preservative: Sodium azide

Precaution of Use: This product contains Sodium azide: a POISONOUS AND HAZARDOUS SUBSTANCE which should be handled by trained staff only.

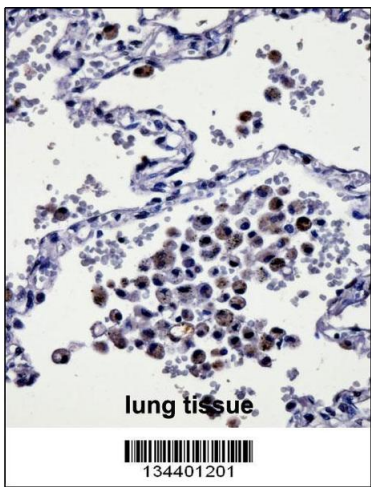
Storage: 4 °C,-20 °C

Storage Comment: Store at 4°C for three months and -20°C, stable for up to one year. As with all antibodies care should be taken to avoid repeated freeze thaw cycles. Antibodies should not be exposed to prolonged high temperatures.



Western Blotting

Image 1. Western blot analysis in ZR-75-1 cell line lysates (35ug/lane).



Immunohistochemistry

Image 2. CYSLTR1 Antibody immunohistochemistry analysis in formalin fixed and paraffin embedded human lung tissue followed by peroxidase conjugation of the secondary antibody and DAB staining.