

Datasheet for ABIN5532989  
**anti-RGS antibody (N-Term)**

## 2 Images

[Go to Product page](#)

## Overview

Quantity:	400 µL
Target:	RGS
Binding Specificity:	AA 149-178, N-Term
Reactivity:	Human
Host:	Rabbit
Clonality:	Polyclonal
Conjugate:	This RGS antibody is un-conjugated
Application:	Western Blotting (WB), Immunohistochemistry (Paraffin-embedded Sections) (IHC (p))

## Product Details

Immunogen:	This RGS9 antibody is generated from rabbits immunized with a KLH conjugated synthetic peptide between 149-178 amino acids from the N-terminal region of human RGS9.
Isotype:	Ig Fraction
Purification:	This antibody is purified through a protein A column, followed by peptide affinity purification.

## Target Details

Target:	RGS
Alternative Name:	RGS9 ( <a href="#">RGS Products</a> )
Background:	This gene encodes a member of the RGS family of GTPase activating proteins that function in various signaling pathways by accelerating the deactivation of G proteins. This protein is anchored to photoreceptor membranes in retinal cells and deactivates G proteins in the rod and

## Target Details

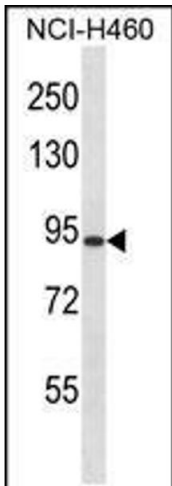
	cone phototransduction cascades. Mutations in this gene result in bradyopsia. Multiple transcript variants encoding different isoforms have been found for this gene.
Molecular Weight:	77 kDa
Gene ID:	8787
UniProt:	<a href="#">075916</a>
Pathways:	<a href="#">Myometrial Relaxation and Contraction</a> , <a href="#">Regulation of G-Protein Coupled Receptor Protein Signaling</a> , <a href="#">Phototransduction</a>

## Application Details

Application Notes:	For WB starting dilution is: 1:1000  For IHC-P starting dilution is: 1:10~50
Restrictions:	For Research Use only

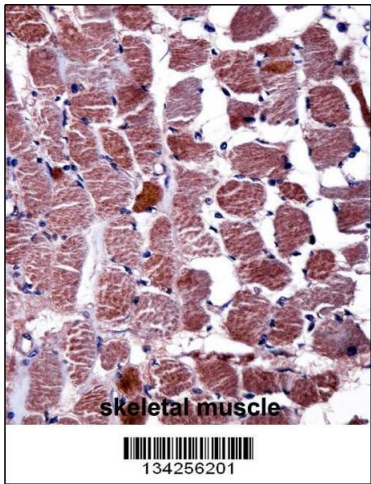
## Handling

Format:	Liquid
Concentration:	0.35 mg/mL
Buffer:	Supplied in PBS with 0.09 % (W/V) sodium azide.
Preservative:	Sodium azide
Precaution of Use:	This product contains Sodium azide: a POISONOUS AND HAZARDOUS SUBSTANCE which should be handled by trained staff only.
Storage:	4 °C, -20 °C
Storage Comment:	Store at 4°C for three months and -20°C, stable for up to one year. As with all antibodies care should be taken to avoid repeated freeze thaw cycles. Antibodies should not be exposed to prolonged high temperatures.



### Western Blotting

**Image 1.** Western blot analysis in NCI-H460 cell line lysates (35ug/lane).



### Immunohistochemistry

**Image 2.** RGS9 Antibody immunohistochemistry analysis in formalin fixed and paraffin embedded human skeletal muscle followed by peroxidase conjugation of the secondary antibody and DAB staining.