

Datasheet for ABIN5532994  
**anti-ST7 antibody (AA 169-197)**[Go to Product page](#)

## 2 Images

## Overview

Quantity:	400 µL
Target:	ST7
Binding Specificity:	AA 169-197
Reactivity:	Human
Host:	Rabbit
Clonality:	Polyclonal
Conjugate:	This ST7 antibody is un-conjugated
Application:	Western Blotting (WB), Flow Cytometry (FACS)

## Product Details

Immunogen:	This ST7 antibody is generated from rabbits immunized with a KLH conjugated synthetic peptide between 169-197 amino acids from the Central region of human ST7.
Isotype:	Ig Fraction
Purification:	This antibody is purified through a protein A column, followed by peptide affinity purification.

## Target Details

Target:	ST7
Alternative Name:	ST7 ( <a href="#">ST7 Products</a> )
Background:	The gene for this product maps to a region on chromosome 7 identified as an autism-susceptibility locus. Mutation screening of the entire coding region in autistic individuals failed to identify phenotype-specific variants, suggesting that coding mutations for this gene are

## Target Details

unlikely to be involved in the etiology of autism. The function of this gene product has not been determined. Transcript variants encoding different isoforms of this protein have been described.

Molecular Weight: 67 kDa

Gene ID: 7982

UniProt: [Q9NRC1](#)

## Application Details

Application Notes: For WB starting dilution is: 1:1000

For FACS starting dilution is: 1:10~50

Restrictions: For Research Use only

## Handling

Format: Liquid

Concentration: 0.5 mg/mL

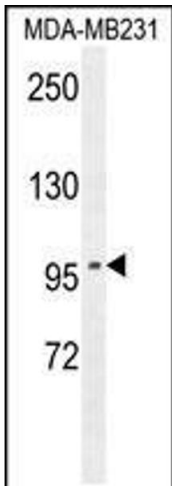
Buffer: Supplied in PBS with 0.09 % (W/V) sodium azide.

Preservative: Sodium azide

Precaution of Use: This product contains Sodium azide: a POISONOUS AND HAZARDOUS SUBSTANCE which should be handled by trained staff only.

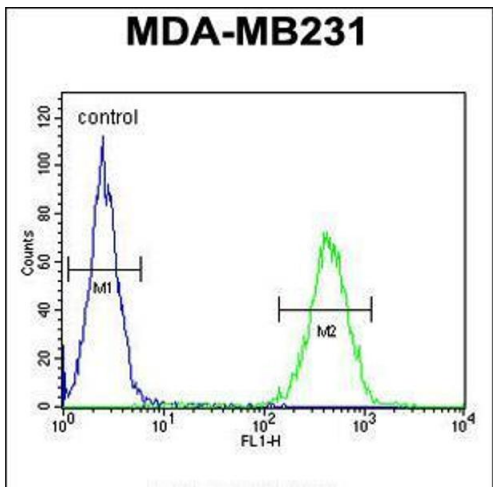
Storage: 4 °C, -20 °C

Storage Comment: Store at 4°C for three months and -20°C, stable for up to one year. As with all antibodies care should be taken to avoid repeated freeze thaw cycles. Antibodies should not be exposed to prolonged high temperatures.



### Western Blotting

**Image 1.** Western blot analysis in MDA-MB231 cell line lysates (35ug/lane).



### Flow Cytometry

**Image 2.** Flow cytometric analysis of MDA-MB231 cells (right histogram) compared to a negative control cell (left histogram). FITC-conjugated goat-anti-rabbit secondary antibodies were used for the analysis.