

Datasheet for ABIN5532996  
**anti-SIRT3 antibody (C-Term)**



[Go to Product page](#)

3 Images

## Overview

Quantity:	200 µL
Target:	SIRT3
Binding Specificity:	AA 304-334, C-Term
Reactivity:	Mouse, Hamster
Host:	Rabbit
Clonality:	Polyclonal
Conjugate:	This SIRT3 antibody is un-conjugated
Application:	Western Blotting (WB), Immunohistochemistry (Paraffin-embedded Sections) (IHC (p))

## Product Details

Immunogen:	This Sirt3 antibody is generated from rabbits immunized with a KLH conjugated synthetic peptide between 304-334 amino acids from the C-terminal region of Mouse Sirt3.
Isotype:	Ig Fraction
Purification:	This antibody is purified through a protein A column, followed by peptide affinity purification.

## Target Details

Target:	SIRT3
Alternative Name:	Sirt3 ( <a href="#">SIRT3 Products</a> )
Background:	<p>SIRT3 is a member of the sirtuin family of proteins, homologs to the yeast Sir2 protein.</p> <p>Members of the sirtuin family are characterized by a sirtuin core domain and grouped into four classes. The functions of human sirtuins have not yet been determined, however, yeast sirtuin</p>

## Target Details

proteins are known to regulate epigenetic gene silencing and suppress recombination of rDNA. Studies suggest that the human sirtuins may function as intracellular regulatory proteins with mono-ADP-ribosyltransferase activity. The SIRT3 is included in class I of the sirtuin family.

Molecular Weight: 37 kDa

Gene ID: 64384

UniProt: [Q8R104](#)

## Application Details

Application Notes: For WB starting dilution is: 1:2000

For IHC-P starting dilution is: 1:50~100

Restrictions: For Research Use only

## Handling

Format: Liquid

Concentration: 0.3 mg/mL

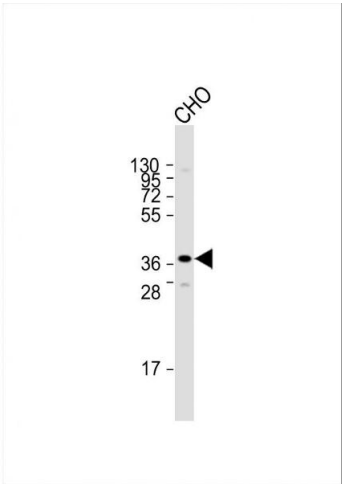
Buffer: Supplied in PBS with 0.09 % (W/V) sodium azide.

Preservative: Sodium azide

Precaution of Use: This product contains Sodium azide: a POISONOUS AND HAZARDOUS SUBSTANCE which should be handled by trained staff only.

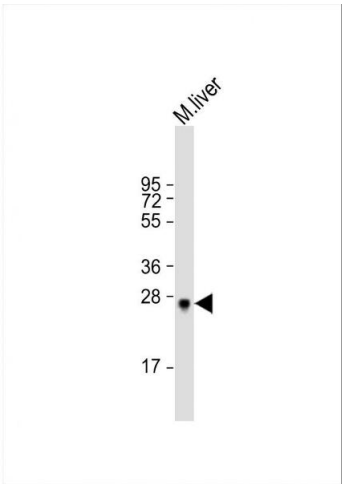
Storage: 4 °C,-20 °C

Storage Comment: Store at 4°C for three months and -20°C, stable for up to one year. As with all antibodies care should be taken to avoid repeated freeze thaw cycles. Antibodies should not be exposed to prolonged high temperatures.



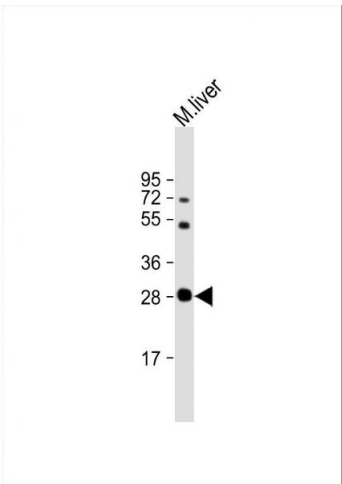
Western Blotting

**Image 1.** Western Blot at 1:2000 dilution + CHO whole cell lysate Lysates/proteins at 20 ug per lane.



Western Blotting

**Image 2.** Western Blot at 1:2000 dilution + mouse liver lysate Lysates/proteins at 20 ug per lane.



Western Blotting

**Image 3.** Western Blot at 1:64000 dilution + mouse liver lysate Lysates/proteins at 20 ug per lane.