



[Go to Product page](#)

Datasheet for ABIN5533048

anti-Cadherin antibody (C-Term)

3 Images

Overview

Quantity:	400 µL
Target:	Cadherin
Binding Specificity:	AA 739-767, C-Term
Reactivity:	Human
Host:	Rabbit
Clonality:	Polyclonal
Conjugate:	This Cadherin antibody is un-conjugated
Application:	Western Blotting (WB), Immunohistochemistry (Paraffin-embedded Sections) (IHC (p))

Product Details

Immunogen:	This M Cadherin (CDH15) antibody is generated from rabbits immunized with a KLH conjugated synthetic peptide between 739-767 amino acids from the C-terminal region of human M Cadherin (CDH15).
Isotype:	Ig Fraction
Purification:	This antibody is purified through a protein A column, followed by peptide affinity purification.

Target Details

Target:	Cadherin
Abstract:	Cadherin Products
Background:	CDH15 is a member of the cadherin superfamily of genes, encoding calcium-dependent intercellular adhesion glycoproteins. Cadherins consist of an extracellular domain containing 5

Target Details

cadherin domains, a transmembrane region, and a conserved cytoplasmic domain. Transcripts from this particular cadherin are expressed in myoblasts and upregulated in myotubule-forming cells. This protein is thought to be essential for the control of morphogenetic processes, specifically myogenesis, and may provide a trigger for terminal muscle cell differentiation.

Molecular Weight: 89 kDa

Gene ID: 1013

UniProt: [P55291](#)

Application Details

Application Notes: For WB starting dilution is: 1:1000

For IHC-P starting dilution is: 1:10~50

Restrictions: For Research Use only

Handling

Format: Liquid

Concentration: 0.4 mg/mL

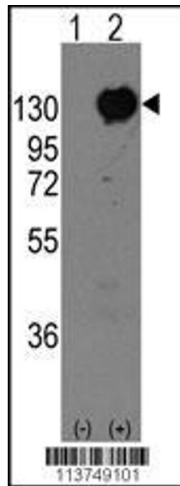
Buffer: Supplied in PBS with 0.09 % (W/V) sodium azide.

Preservative: Sodium azide

Precaution of Use: This product contains Sodium azide: a POISONOUS AND HAZARDOUS SUBSTANCE which should be handled by trained staff only.

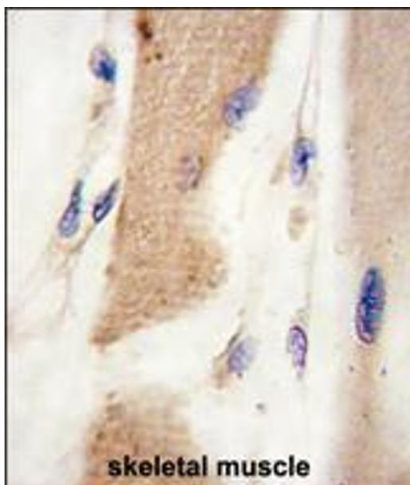
Storage: 4 °C, -20 °C

Storage Comment: Store at 4°C for three months and -20°C, stable for up to one year. As with all antibodies care should be taken to avoid repeated freeze thaw cycles. Antibodies should not be exposed to prolonged high temperatures.



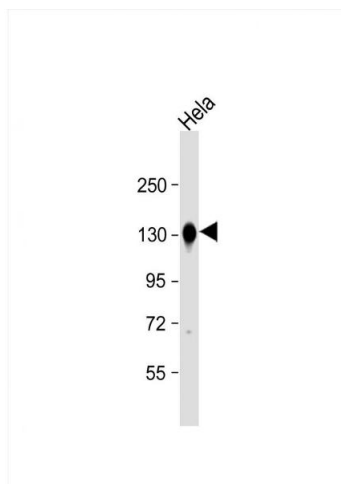
Western Blotting

Image 1. Western blot analysis of CDH15 using rabbit polyclonal CDH15 Antibody using 293 cell lysates (2 ug/lane) either nontransfected (Lane 1) or transiently transfected with the CDH15 gene (Lane 2).



Immunohistochemistry

Image 2. Formalin-fixed and paraffin-embedded human skeletal muscle tissue reacted with CDH15 antibody, which was peroxidase-conjugated to the secondary antibody, followed by DAB staining.



Western Blotting

Image 3. Western Blot at 1:8000 dilution + HeLa whole cell lysate Lysates/proteins at 20 ug per lane.