

Datasheet for ABIN5533051  
**anti-DDX28 antibody (C-Term)**



[Go to Product page](#)

1 Image

## Overview

Quantity:	400 µL
Target:	DDX28
Binding Specificity:	AA 370-398, C-Term
Reactivity:	Human
Host:	Rabbit
Clonality:	Polyclonal
Conjugate:	This DDX28 antibody is un-conjugated
Application:	Western Blotting (WB)

## Product Details

Immunogen:	This DDX28 antibody is generated from rabbits immunized with a KLH conjugated synthetic peptide between 370-398 amino acids from the C-terminal region of human DDX28.
Isotype:	Ig Fraction
Purification:	This antibody is purified through a protein A column, followed by peptide affinity purification.

## Target Details

Target:	DDX28
Alternative Name:	DDX28 ( <a href="#">DDX28 Products</a> )
Background:	DEAD box proteins, characterized by the conserved motif Asp-Glu-Ala-Asp (DEAD), are putative RNA helicases. They are implicated in a number of cellular processes involving alteration of RNA secondary structure, such as translation initiation, nuclear and mitochondrial splicing, and

## Target Details

ribosome and spliceosome assembly. Based on their distribution patterns, some members of the DEAD box protein family are believed to be involved in embryogenesis, spermatogenesis, and cellular growth and division. This gene is intronless. It encodes an RNA-dependent ATPase. The encoded protein is localized in the mitochondria and the nucleus, and can be transported between the mitochondria and the nucleus. [provided by RefSeq].

Molecular Weight: 60 kDa

Gene ID: 55794

UniProt: [Q9NUL7](#)

## Application Details

Application Notes: For WB starting dilution is: 1:1000

Restrictions: For Research Use only

## Handling

Format: Liquid

Concentration: 0.5 mg/mL

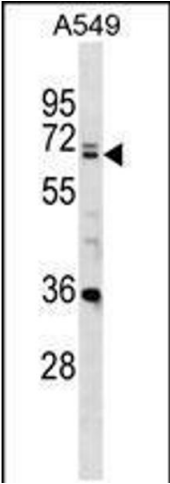
Buffer: Supplied in PBS with 0.09 % (W/V) sodium azide.

Preservative: Sodium azide

Precaution of Use: This product contains Sodium azide: a POISONOUS AND HAZARDOUS SUBSTANCE which should be handled by trained staff only.

Storage: 4 °C,-20 °C

Storage Comment: Store at 4°C for three months and -20°C, stable for up to one year. As with all antibodies care should be taken to avoid repeated freeze thaw cycles. Antibodies should not be exposed to prolonged high temperatures.



Western Blotting

**Image 1.** Western blot analysis in A549 cell line lysates (35ug/lane).