

Datasheet for ABIN5533054  
**anti-DPP10 antibody (AA 150-177)**[Go to Product page](#)

## 2 Images

## Overview

Quantity:	400 µL
Target:	DPP10
Binding Specificity:	AA 150-177
Reactivity:	Human, Mouse
Host:	Rabbit
Clonality:	Polyclonal
Conjugate:	This DPP10 antibody is un-conjugated
Application:	Western Blotting (WB), Immunohistochemistry (Paraffin-embedded Sections) (IHC (p))

## Product Details

Immunogen:	This DPP10 antibody is generated from rabbits immunized with a KLH conjugated synthetic peptide between 150-177 amino acids from the Central region of human DPP10.
Isotype:	Ig Fraction
Purification:	This antibody is purified through a protein A column, followed by peptide affinity purification.

## Target Details

Target:	DPP10
Alternative Name:	DPP10 ( <a href="#">DPP10 Products</a> )
Background:	DPP10 is a single-pass type II membrane protein that is a member of the S9B family in clan SC of the serine proteases. This protein has no detectable protease activity, most likely due to the absence of the conserved serine residue normally present in the catalytic domain of serine

## Target Details

proteases. However, it does bind specific voltage-gated potassium channels and alters their expression and biophysical properties.

Molecular Weight: 91 kDa

Gene ID: 57628

UniProt: [Q8N608](#)

## Application Details

Application Notes: For WB starting dilution is: 1:1000

For IHC-P starting dilution is: 1:50~100

Restrictions: For Research Use only

## Handling

Format: Liquid

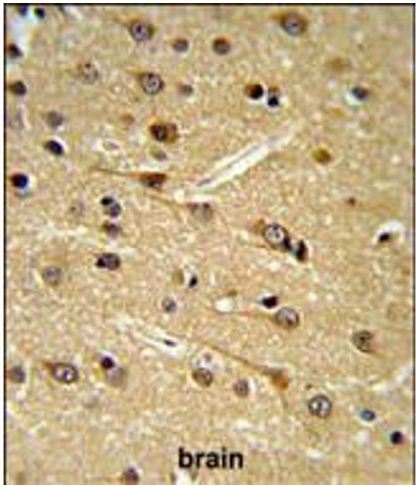
Buffer: Supplied in PBS with 0.09 % (W/V) sodium azide.

Preservative: Sodium azide

Precaution of Use: This product contains Sodium azide: a POISONOUS AND HAZARDOUS SUBSTANCE which should be handled by trained staff only.

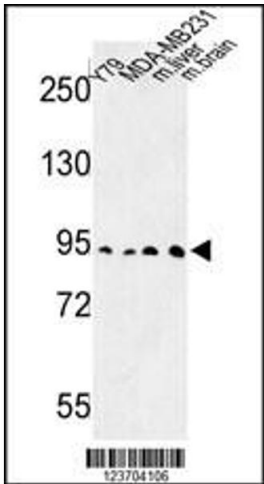
Storage: 4 °C, -20 °C

Storage Comment: Store at 4°C for three months and -20°C, stable for up to one year. As with all antibodies care should be taken to avoid repeated freeze thaw cycles. Antibodies should not be exposed to prolonged high temperatures.



### Immunohistochemistry

**Image 1.** DPP10 Antibody IHC analysis in formalin fixed and paraffin embedded brain tissue followed by peroxidase conjugation of the secondary antibody and DAB staining.



### Western Blotting

**Image 2.** Western blot analysis of DPP10 Antibody in Y79, MDA-MB231 cell line and mouse liver, brain tissue lysates (35ug/lane)