



[Go to Product page](#)

Datasheet for ABIN5533062
anti-MRGPRX2 antibody (C-Term)

1 Image

Overview

Quantity:	400 µL
Target:	MRGPRX2
Binding Specificity:	AA 287-315, C-Term
Reactivity:	Human
Host:	Rabbit
Clonality:	Polyclonal
Conjugate:	This MRGPRX2 antibody is un-conjugated
Application:	Western Blotting (WB)

Product Details

Immunogen:	This MRGPRX2 antibody is generated from rabbits immunized with a KLH conjugated synthetic peptide between 287-315 amino acids from the C-terminal region of human MRGPRX2.
Isotype:	Ig Fraction
Purification:	This antibody is purified through a protein A column, followed by peptide affinity purification.

Target Details

Target:	MRGPRX2
Alternative Name:	MRGPRX2 (MRGPRX2 Products)
Background:	MRGPRX2 is the orphan receptor. Probably involved in the function of nociceptive neurons. May regulate nociceptor function and/or development, including the sensation or modulation of pain. Cortistatin-14 seems to be a high potency ligand at this receptor. Cortistatin has several

Target Details

biological functions including roles in sleep regulation locomotor activity, and cortical function. In receptor-expressing cells, cortistatin-stimulated increases in intracellular Ca(2+) but had no effect on basal or forskolin-stimulated cAMP levels, suggesting that this receptor is G(q)-coupled.

Molecular Weight: 37 kDa

Gene ID: 117194

UniProt: [Q96LB1](#)

Application Details

Application Notes: For WB starting dilution is: 1:1000

Restrictions: For Research Use only

Handling

Format: Liquid

Concentration: 0.5 mg/mL

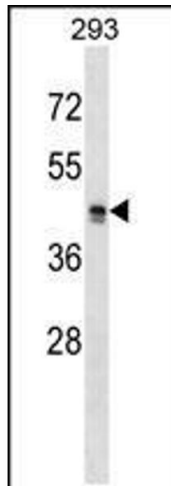
Buffer: Supplied in PBS with 0.09 % (W/V) sodium azide.

Preservative: Sodium azide

Precaution of Use: This product contains Sodium azide: a POISONOUS AND HAZARDOUS SUBSTANCE which should be handled by trained staff only.

Storage: 4 °C,-20 °C

Storage Comment: Store at 4°C for three months and -20°C, stable for up to one year. As with all antibodies care should be taken to avoid repeated freeze thaw cycles. Antibodies should not be exposed to prolonged high temperatures.



Western Blotting

Image 1. Western blot analysis in 293 cell line lysates (35ug/lane).