



[Go to Product page](#)

Datasheet for ABIN5533071
anti-HERV antibody (AA 400-429)

1 Image

Overview

Quantity:	200 µL
Target:	HERV
Binding Specificity:	AA 400-429
Reactivity:	Human
Host:	Rabbit
Clonality:	Polyclonal
Conjugate:	This HERV antibody is un-conjugated
Application:	Western Blotting (WB)

Product Details

Immunogen:	This HERV (ERVWE1) antibody is generated from rabbits immunized with a KLH conjugated synthetic peptide between 400-429 amino acids from the Central region of human HERV (ERVWE1).
Isotype:	Ig Fraction
Purification:	This antibody is prepared by Saturated Ammonium Sulfate (SAS) precipitation followed by dialysis

Target Details

Target:	HERV
Alternative Name:	HERV (HERV Products)
Target Type:	Virus

Target Details

Background: Many different human endogenous retrovirus (HERV) families are expressed in normal placental tissue at high levels, suggesting that HERVs are functionally important in reproduction. The protein, also known as syncytin, is expressed in the placental syncytiotrophoblast and is involved in fusion of the cytotrophoblast cells to form the syncytial layer of the placenta. This protein has the characteristics of a typical retroviral envelope protein, including a furin cleavage site that separates the surface (SU) and transmembrane (TM) proteins which form a heterodimer.

Molecular Weight: 60 kDa

Gene ID: 30816

UniProt: [Q9UQF0](#)

Application Details

Application Notes: For WB starting dilution is: 1:1000

Restrictions: For Research Use only

Handling

Format: Liquid

Concentration: 2 mg/mL

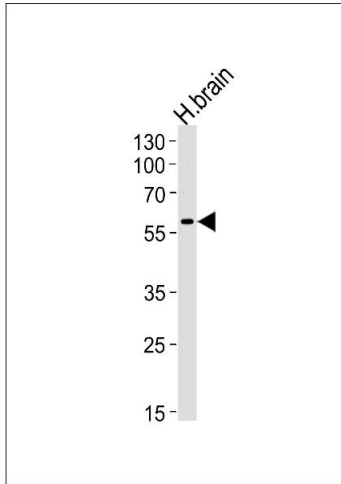
Buffer: Supplied in PBS with 0.09 % (W/V) sodium azide.

Preservative: Sodium azide

Precaution of Use: This product contains Sodium azide: a POISONOUS AND HAZARDOUS SUBSTANCE which should be handled by trained staff only.

Storage: 4 °C, -20 °C

Storage Comment: Store at 4°C for three months and -20°C, stable for up to one year. As with all antibodies care should be taken to avoid repeated freeze thaw cycles. Antibodies should not be exposed to prolonged high temperatures.



Western Blotting

Image 1. Western blot analysis of lysate from human brain tissue lysate, using Syncytin(ERVWE1) Antibody at 1:1000 at each lane.