



[Go to Product page](#)

Datasheet for ABIN5533094
anti-DUSP15 antibody (AA 125-153)

2 Images

Overview

Quantity:	400 µL
Target:	DUSP15
Binding Specificity:	AA 125-153
Reactivity:	Human
Host:	Rabbit
Clonality:	Polyclonal
Conjugate:	This DUSP15 antibody is un-conjugated
Application:	Western Blotting (WB), Immunohistochemistry (Paraffin-embedded Sections) (IHC (p))

Product Details

Immunogen:	This DUSP15 antibody is generated from rabbits immunized with a KLH conjugated synthetic peptide between 125-153 amino acids from the Central region of human DUSP15.
Isotype:	Ig Fraction
Purification:	This antibody is purified through a protein A column, followed by peptide affinity purification.

Target Details

Target:	DUSP15
Alternative Name:	DUSP15 (DUSP15 Products)
Background:	The protein encoded by this gene belongs to the non-receptor class of the protein-tyrosine phosphatase family. The encoded protein has both protein-tyrosine phosphatase activity and serine/threonine-specific phosphatase activity, and therefore is known as a dual specificity

Target Details

phosphatase. Three transcript variants encoding two different isoforms have been found for this gene.

Molecular Weight: 32 kDa

Gene ID: 128853

UniProt: [Q9H1R2](#)

Application Details

Application Notes: For WB starting dilution is: 1:1000

For IHC-P starting dilution is: 1:10~50

Restrictions: For Research Use only

Handling

Format: Liquid

Concentration: 0.5 mg/mL

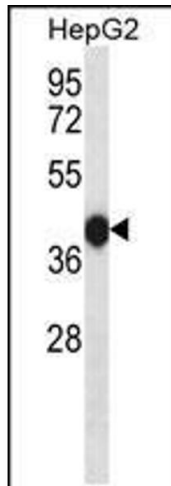
Buffer: Supplied in PBS with 0.09 % (W/V) sodium azide.

Preservative: Sodium azide

Precaution of Use: This product contains Sodium azide: a POISONOUS AND HAZARDOUS SUBSTANCE which should be handled by trained staff only.

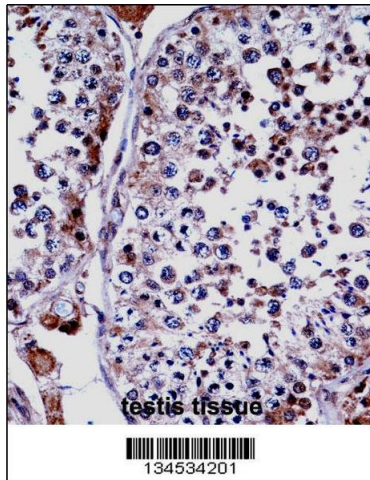
Storage: 4 °C, -20 °C

Storage Comment: Store at 4°C for three months and -20°C, stable for up to one year. As with all antibodies care should be taken to avoid repeated freeze thaw cycles. Antibodies should not be exposed to prolonged high temperatures.



Western Blotting

Image 1. Western blot analysis in HepG2 cell line lysates (35ug/lane).



Immunohistochemistry

Image 2. DUSP15 Antibody immunohistochemistry analysis in formalin fixed and paraffin embedded human testis tissue followed by peroxidase conjugation of the secondary antibody and DAB staining.