

Datasheet for ABIN5533151  
**anti-SLC2A2 antibody (N-Term)**



[Go to Product page](#)

3 Images

## Overview

|                      |  |
|----------------------|--|
| Quantity:            | 400 µL                                       |
| Target:              | SLC2A2                                       |
| Binding Specificity: | AA 31-60, N-Term                             |
| Reactivity:          | Human  |
| Host:                | Rabbit                                       |
| Clonality:           | Polyclonal                                   |
| Conjugate:           | This SLC2A2 antibody is un-conjugated        |
| Application:         | Western Blotting (WB), Flow Cytometry (FACS) |

## Product Details

|               |  |
|---------------|--|
| Immunogen:    | This GLUT2 (SLC2A2) antibody is generated from rabbits immunized with a KLH conjugated synthetic peptide between 31-60 amino acids from the N-terminal region of human GLUT2 (SLC2A2). |
| Isotype:      | Ig Fraction  |
| Purification: | This antibody is prepared by Saturated Ammonium Sulfate (SAS) precipitation followed by dialysis   |

## Target Details

|                   |   |
|-------------------|---|
| Target:           | SLC2A2  |
| Alternative Name: | GLUT2 ( <a href="#">SLC2A2 Products</a> )   |
| Background:       | Glucose transporter 2 isoform is an integral plasma membrane glycoprotein of the liver, islet |

## Target Details

---

beta cells, intestine, and kidney epithelium. It mediates facilitated bidirectional glucose transport. Because of its low affinity for glucose, it has been suggested as a glucose sensor.

Molecular Weight: 57 kDa

Gene ID: 6514

UniProt: [P11168](#)

Pathways: [Warburg Effect](#)

## Application Details

---

Application Notes: For WB starting dilution is: 1:1000

For FACS starting dilution is: 1:10~50

Restrictions: For Research Use only

## Handling

---

Format: Liquid

Concentration: 2 mg/mL

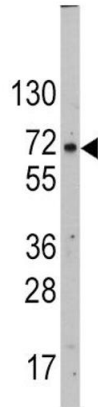
Buffer: Supplied in PBS with 0.09 % (W/V) sodium azide.

Preservative: Sodium azide

Precaution of Use: This product contains Sodium azide: a POISONOUS AND HAZARDOUS SUBSTANCE which should be handled by trained staff only.

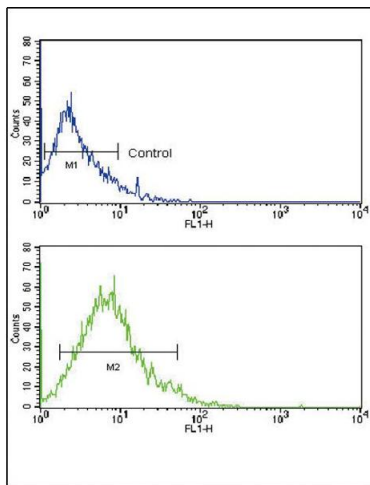
Storage: 4 °C,-20 °C

Storage Comment: Store at 4°C for three months and -20°C, stable for up to one year. As with all antibodies care should be taken to avoid repeated freeze thaw cycles. Antibodies should not be exposed to prolonged high temperatures.



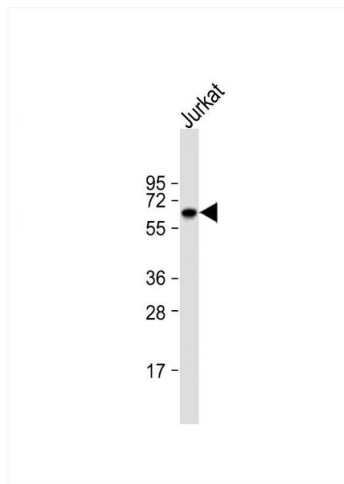
**Western Blotting**

**Image 1.** Western blot analysis of SLC2A2 Antibody in HepG2 cell line lysates (35ug/lane)



**Flow Cytometry**

**Image 2.** Flow cytometric analysis of HL-60 cells using GLUT2 (SLC2A2) Antibody (bottom histogram) compared to a negative control cell (top histogram). FITC-conjugated goat-anti-rabbit secondary antibodies were used for the analysis.



**Western Blotting**

**Image 3.** Western Blot at 1:1000 dilution + Jurkat whole cell lysate Lysates/proteins at 20 ug per lane.